

2016.A

KORLOY PROMOTIONS



VALID Through Jul 29, 2016

- **Universal Grade**
- **Special offer**
- **RM4**
- **KGT**
- **HRMD**
- **King Drill**
- **Pro-L**
- **TPDB**
- **Auto Tool**



 **KORLOY AMERICA Inc.**

620 Maple Avenue, Torrance, CA 90503, USA

Tel : 310-782-3800 Toll Free : 888-711-0001 Fax : 310-782-3885

Web : www.korloyamerica.com E-mail : sales@korloy.us

One Choice for Most of Your Turning Applications

'Universal Grades' PC5300/PC5400/NC5330

As low as \$3.49 Each*

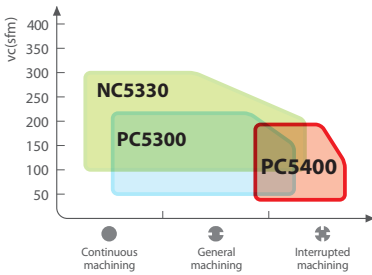
Limited Time Offer

Minimum Order of 20 pcs. Required.

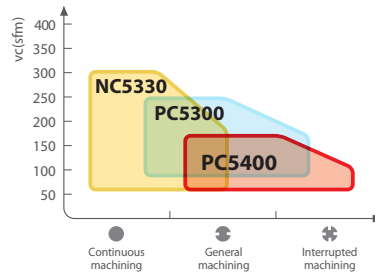


• Grade Choice

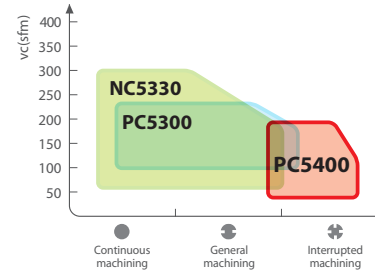
P Steel



M Stainless steel

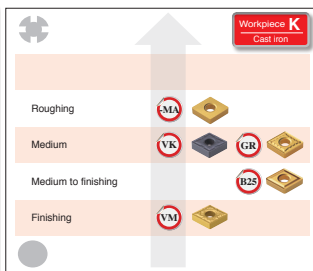
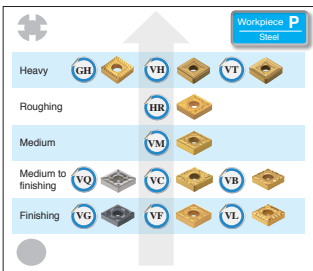


K Cast iron

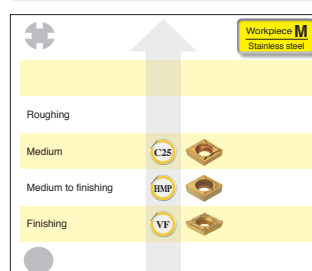
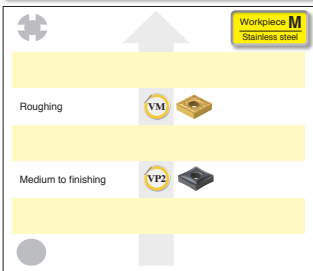
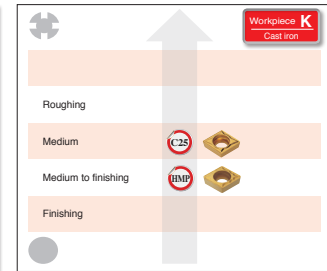
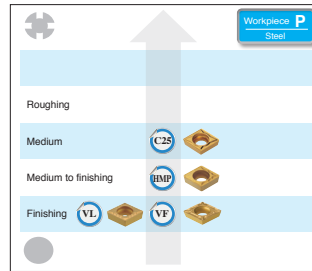


• Chip breaker Choice

Negative inserts



Positive inserts



Note

**Limited to Stock Standard M class 4 series inserts only types C,S, and W.

4 series R types inserts price is \$3.59

4 series D, T, and CCMT types price is \$4.19

4 series V type inserts price is \$5.19

RICH MILL RM4

Heavy Duty Free Cutting 90° Face Mill

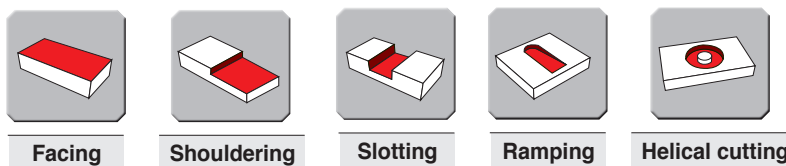
The Definition of High Performance

GET FREE CUTTER

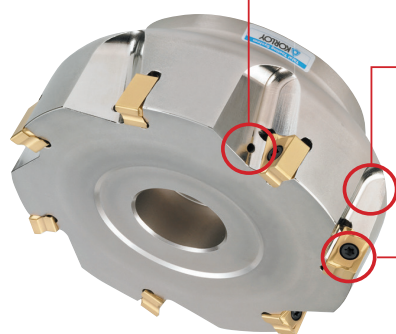
with the purchase of 10 inserts per cutter pocket



4 Edges



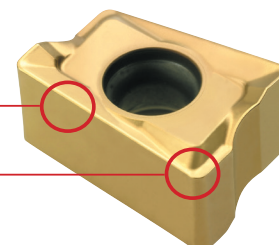
Features



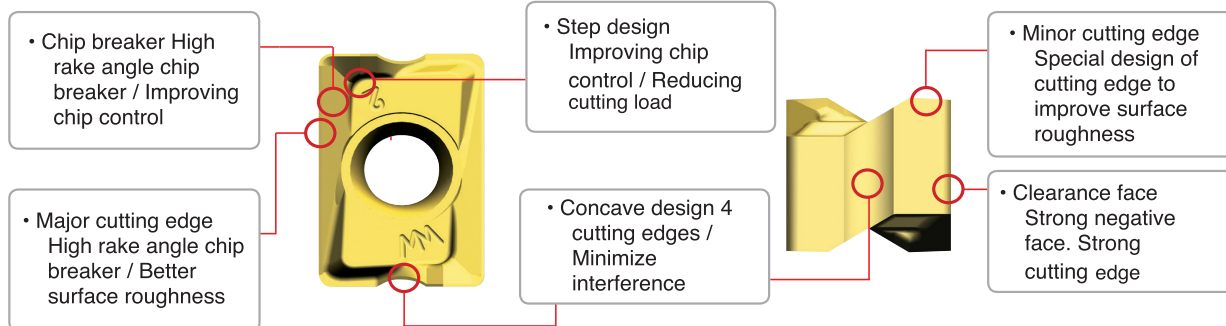
- Through coolant system Longer tool life due to direct cooling injection into the cutting edge of insert
- Wide chip pocket for better chip evacuation
- Simple screw on system

Double sided insert has 4 cutting edges

- Strong negative insert with high rake angle for improved performance



Insert



Note

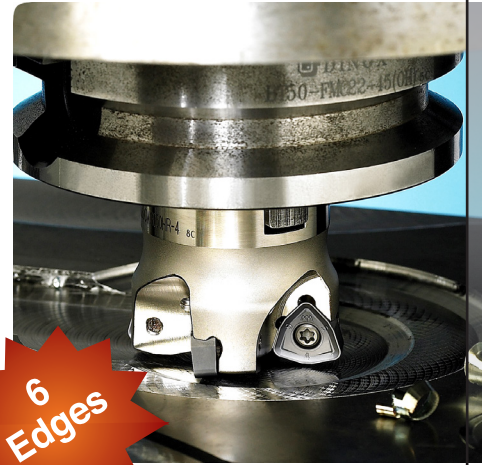
- Limited to Stock Standard Cutters and Inserts
- Includes RM4Z cutters

High Feed Milling

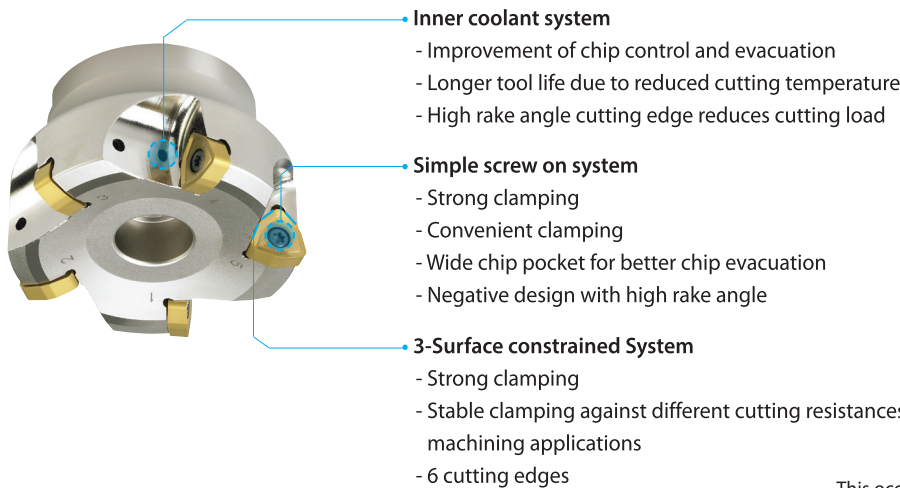
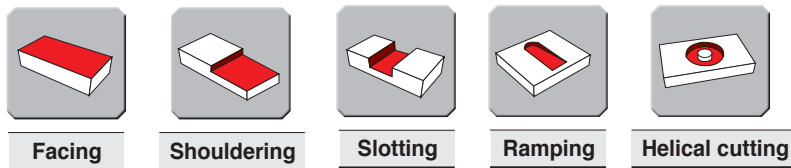
You Have to Run It to Believe It

GET FREE CUTTER
And 1 year Replacement Warranty

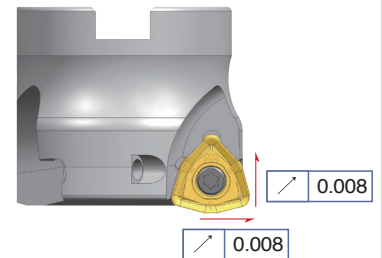
with the purchase of 10 inserts per cutter pocket



6 Edges



Features



NOTE : Some insert feature information is repeated. This occurs because multiple insert features provide the same benefit. Example: Symmetrical design.

Recommended cutting condition

	Workpiece	Hardness	Grades	vc (sfm)	fz (ipt)
P	General structural steel, Mild steel	Under 200HB	PC3500	650(330~750)	1.0 ~ 2.0
			PC3545		
	Carbon steel, Alloy steel	Under 30HRC	PC3500	590(330~720)	1.0 ~ 1.5
			PC3545		
High Carbon steel, Alloy steel	30~40 HRC	PC3500	520(330~660)	0.8 ~ 1.3	
		PC3545			
Pre-hardened steel	40~50 HRC	PC3500	390(260~190)	0.6 ~ 1.2	
		PC5300			
M	Stainless steel	Under 270HB	PC5300	390(260~490)	0.8 ~ 1.3
K	Cast iron	Under 350N/mm ²	PC3545	590(330~720)	1.2 ~ 1.8
			PC5300		

Note

• Limited to Stock Standard Cutters and Inserts

Warranty requires registration of cutter with Korloy America. Subject to limitations. Korloy America reserves the right to change the terms and conditions of the Warranty.

PRO-L MILL **NEW**

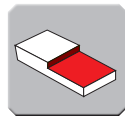
3P's - High Performance, Perpendicularity, and Precision



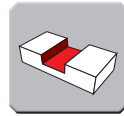
Buy 10 inserts and **GET a Free cutter body**



Facing



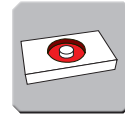
Shouldering



Slotting



Ramping



Helical cutting

Features

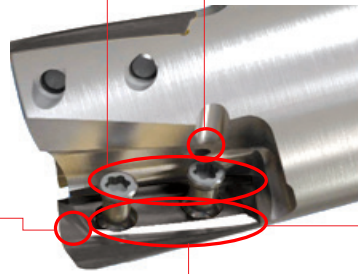
Long Edge Milling Performance in Aluminum, Stainless Steel, and HRSA materials.

Enhanced chip flow and increased tool life by inner coolant system

Strong clamping with 2 screw design

Improved perpendicularity and decreased cutting resistance due to application of High Helix

Set of various Nose-R



1.25 & 1.50 dia ap= 0.984
2.00 & 2.50 dia ap = 1.339

Chip breaker

Usage	Insert's type		Edge type	Features
Al	MA			Application of the edge optimized for Aluminum machining and buffed finish ensure excellent machining quality
Hard-to-cut material	ML			Design of Low cutting resistance Chip Breaker ensures excellent machining quality for light cutting and Hard-to-cut material

Note

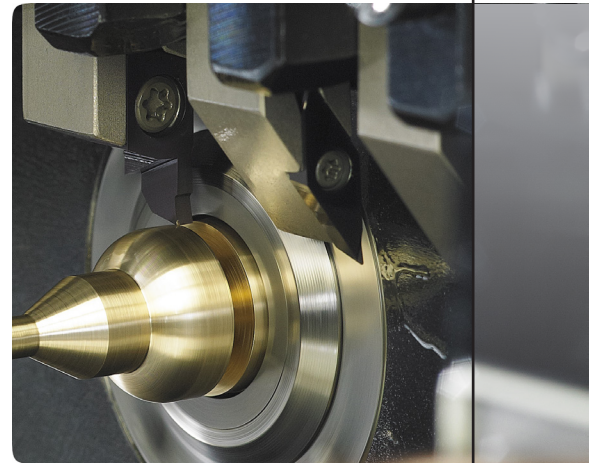
• Limited to Stock Standard Cutters and Inserts

category	M (STS)	N (Non-ferrous metal-Al)	S (HRSA)
Grade	PC5300 / PC5400	H01	PC5300 / PC5400
MA	-	○	-
ML	○	-	○



Precision Machining with Korloy Quality, Performance, Value, and Now MORE Flexibility

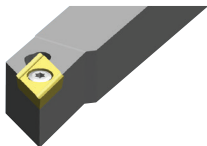
Buy Just 10 inserts and
**Get a FREE
 Matching Holder**



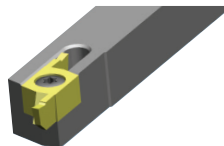
• Features

- Excellent for precision machining
- Excellent for complicated machining
- Excellent for small part machining
- Available for various types of machining
- Whole inserts can be clamped on only one FGT holders
- ISO whole holders Offset "0"

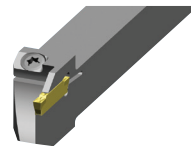
• Type



ISO



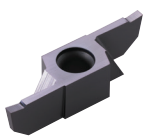
FGT



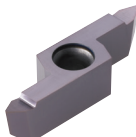
MGT

• Multi functional auto tool(FGT)

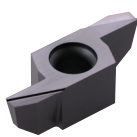
Possible to clamp on only one holder (Ex : 06 size whole inserts - Clamping on the 06 size holder)



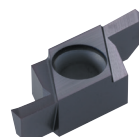
SG : Grooving



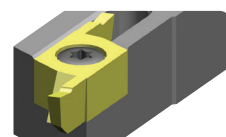
ST : Threading



SB : Back-turning



SGB : Grooving & Back-turning



SC : Parting off

• Recommended cutting condition

Workpiece	Turning		Grooving		Parting off		Back-turning	
	Cutting Speed(sfm)	Feed(ipr)	Cutting Speed(sfm)	Feed(ipr)	Cutting Speed(sfm)	Feed(ipr)	Cutting Speed(sfm)	Feed(ipr)
Stainless steel	160~400	0.0008~0.0079	100~400	0.0008~0.0020	160~400	0.0008~0.0020	100~400	0.0008~0.0079
Carbon steel	160~490	0.0004~0.0098	160~490	0.0008~0.0031	160~490	0.0008~0.0031	160~490	0.0004~0.0098
Free-cutting steel	100~490	0.0008~0.0098	100~490	0.0008~0.0031	100~490	0.0008~0.0031	100~490	0.0004~0.0098
Non-ferrous metal	230~660	0.0012~0.0098	230~660	0.0012~0.0039	230~660	0.0012~0.0039	230~660	0.0012~0.0118

Note

• Limited to Stock Standard Holders and Inserts

KORLOY'S BEST MILLING

High Performance in General Milling on Select Future Mills and Alpha Mills

While Supplies Last Get a FREE CUTTER with the Purchase of as few as ONLY 10 INSERTS.

FMACA4600R-NI

No. of Pocket : 7
 Function : Face Milling
 AA 45°, AR21°, RR 17°~12°
 Cutter Material type : Nickel coated Steel
 Arbor Hole Diameter : 2 inches
 Cutting Diameter : 6 inches
 Cutting Direction : Right Hand
 Insert Designation : SEXT14M4AGSN w/ any Grade



AMCA3400HS

No. of pocket : 8
 Function : Face Milling,Shouldering, Slotting,
 Ramping, Helical Cutting
 AA 0°, AR13°~15°, RR 12°~7°
 Cutting Diameter : 4 inches
 Cutting Direction : Right Hand
 insert designation : APMT1604 w/ any Grade



AMSA2075S

No. of pocket : 2
 Function : Face Milling,Shouldering, Slotting,
 Ramping, Helical Cutting
 AA 0°, AR3°~14°, RR -25°~-18°
 Cutting Diameter : 3/4 inches (0.750)
 Cutting Direction : Right Hand
 Insert designation : APMT11T3 w/ any Grade



AMSA2050S

No. of pocket : 1
 Function : Face Milling,Shouldering, Slotting,
 Ramping, Helical Cutting
 AA 0°, AR3°~14°, RR -25°~-18°
 Cutting Diameter : 1/2 inches (0.500)
 Cutting Direction : Right Hand
 Insert designation : APMT11T3 w/ any Grade



PALSA200HR-3S125

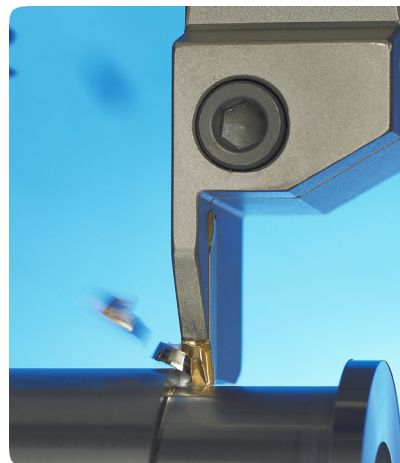
No. of pocket : 3
 Function : Face Milling, Slotting, Ramping, Helical
 Cutting
 AA 0°, AR12°~16°, RR -5° ~ -8°
 Cutting Diameter : 2 inches
 Cutting Direction : Right Hand
 Insert designation : LXET3405





More Performance, More Precision, More Stability

Introductory Offer
Buy Any KGT Holder and receive
10 Free Inserts



Top side(Insert)



- Strong clamping → Higher machining reliability
- Self-centering → Higher accuracy
- Anti-chatter design → Fine surface finish



• **Recommended Insert**

Designation	Geometry	Picture	Application									
			For external machining			For face grooving		For Internal machining		Copying	For relieving	Special machining
			Parting	Grooving	Turning	Grooving	Turning	Grooving	Turning	Copying	Relieving	Special
KGMM	L Light Grooving		○	⊙		○						
	R Rough Grooving		○	⊙		○						
	T Turning-Multi Grooving		○	⊙	⊙	⊙	⊙					
KGMI	T Internal Grooving							⊙	⊙			
KRMN	C Copying									⊙	⊙	
KGMRL	LP Light Parting		⊙									
	RP Rough Parting		⊙									

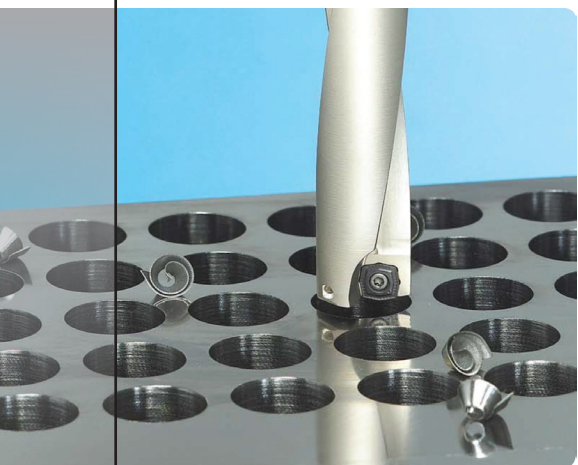
⊙ First choice, ○ Second choice

Note

- Limited to Stock Standard Holders and Inserts
- Limited to M Class inserts

KING DRILL

High Performance and Improve Chip Evacuation



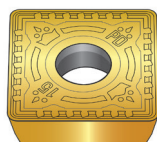
Buy 40 Inserts and Get a Free Drill body up to 1.0 inch

Buy 60 Inserts and Get a Free Drill body up to 2.0 inch

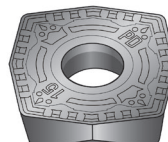
Features



The optimized shape of the flute increases the rigidity of the drill body and improves chip evacuation



Peripheral insert



Central insert

Optimized design of inserts for maximum drilling efficiency

- ▶ Excellent cutting performance and chip control due to the optimized geometry and chip breaker of both inserts, central & peripheral.
- ▶ Different inserts, optimized for the central and peripheral insert locations in order to maximize cutting tool life.

Recommended cutting condition

Workpiece			Grade	vc	Feed(aspect ratio=2D, 3D, 4D)						
ISO	Workpiece	Hardness(HB)			sfm	Feed (ipr) depending on drill Dia.(inch)					
						0.47~0.63	0.64~0.91	0.92~1.14	1.15~1.65	1.66~2.36	
P	Carbon steel	Low carbon steel	80~180	LD	Central PC5335	492(197~591)	0.0016~0.0031	0.0016~0.0031	0.0016~0.0031	0.0031~0.0071	0.0016~0.0031
		High carbon	180~280	PD	Central Peripheral PC5300	623(427~820)					
	Alloy steel	Low alloy steel	140~260	LD	Central PC5335	492(197~591)	0.0024~0.0039	0.0024~0.0039	0.0024~0.0063	0.0024~0.0079	0.0024~0.0079
		Low pre-hardened	200~400	PD	Central Peripheral PC5300	492(295~856)	0.0016~0.004	0.002~0.005	0.003~0.0063	0.0031~0.0079	0.0031~0.0094
		Low alloy steel	50~260	PD	Central Peripheral PC5300	328(164~492)	0.0016~0.004	0.002~0.005	0.003~0.0063	0.0031~0.0071	0.0031~0.0087
	High pre-hardened steel	220~450	PD	Central Peripheral PC5300	328(164~525)	0.0016~0.007	0.002~0.005	0.003~0.0063	0.0031~0.0071	0.0031~0.0087	
M	Stainless steel	Austenite series	135-275	LD	Central PC5335	295(131~492)	0.0016~0.004	0.0024~0.0047	0.0024~0.0047	0.0024~0.0047	0.0024~0.0047
		PD	Central Peripheral PC5300	0.0016~0.004	0.0024~0.0047		0.0024~0.0055	0.0024~0.0063	0.0024~0.0079		
		Ferrite series	135~275	LD	Central PC5335	328(197~525)	0.0016~0.004	0.0024~0.0047	0.0024~0.0047	0.0024~0.0047	0.0024~0.0047
		Martensite series	135~275	PD	Central Peripheral PC5300		0.0016~0.004	0.0016~0.0047	0.0024~0.0055	0.0024~0.0063	0.0024~0.0079
K	Cast iron	Gray cast iron	150~230	PD	Central Peripheral PC5300	623(492~820)	0.0016~0.004	0.002~0.0055	0.0024~0.0063	0.0039~0.0087	0.0039~0.0102
		Ductile cast iron	150~230	PD	Central Peripheral PC5300	492(328~656)	0.0016~0.005	0.0024~0.0063	0.0031~0.0071	0.0031~0.0079	0.0039~0.0087
S	Heat resisting alloy	Ni-heat resisting alloy	130~400	PD	PC5300	164(98~328)	0.0016~0.002	0.0016~0.0031	0.0016~0.0039	0.0024~0.0047	0.0024~0.0047
		Ti-heat resisting alloy	130~400	PD	PC5300	131(98~295)	0.0016~0.003	0.0016~0.0039	0.0024~0.0047	0.0031~0.0055	0.0031~0.0063
		High hardened steel	400~	PD	PC5300	131(66~262)	0.0016~0.003	0.0016~0.0039	0.0031~0.0047	0.0031~0.0055	0.0031~0.0063

• In case of 5D, reduce 30~40% of cutting condition from the above.
 • In interrupted machining part, reduce 30~50% of feed from the above machining around interrupted part.

Note

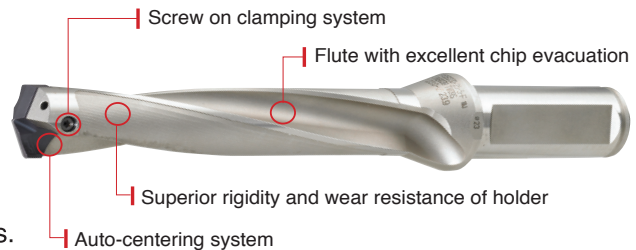
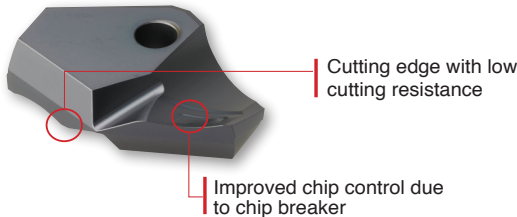
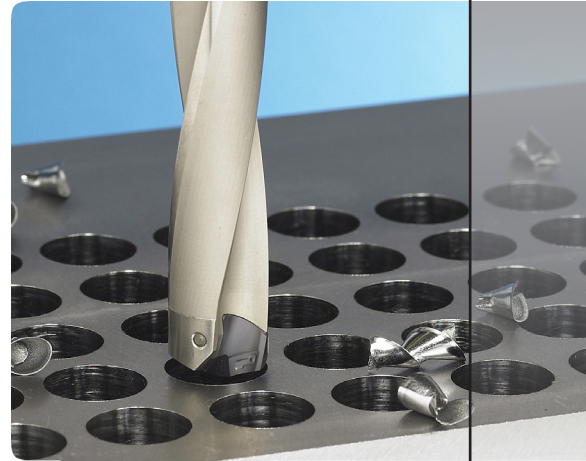
- Limited to Stock Standard Drills and Inserts
- Up to 1" valid on 2D-3D-4D-5D drills. Over 1" - up to 2" valid on 2D-3D-4D drills. 5D over 1" drills require 80 inserts.



3D, 5D, and 8D Drills for Combined Precision and Productivity

Buy 5 Tips and Get a **FREE DRILL BODY**
 or Buy 5 Tips and Get 2 tips **FREE**

Free tip offer limited to tip of equal or lower price of purchased tips.



- High precision clamping system.
- Cutting edge produces superior surface finishes.
- Holder with superb durability.

• Recommended cutting condition

Workpiece			Grade	vc	fn(aspect ratio=3D~5D)			
ISO	Workpiece	HB			Feed(ipr) per drill Dia.(inch)			
				sfm	0.3937~0.6260	0.6300~0.9803	0.9843~1.1772	
P	Carbon steel	Low carbon	80-120	PC5300	365(265 - 464)	0.0059~0.0118	0.0079~0.0138	0.0098~0.0157
		High carbon	180~280	PC5300	332(232 - 431)	0.0059~0.0118	0.0079~0.0138	0.0098~0.0157
	Alloy steel	Low alloy steel	140~260	PC5300	365(265 - 464)	0.0071~0.0138	0.0091~0.015	0.0110~0.0169
		Low pre-hardened	200~400	PC5300	249(166 - 332)	0.0071~0.0138	0.0091~0.015	0.0110~0.0169
		High alloy steel	50-260	PC5300				
		High pre-hardened	220~450	PC5300	232(166 - 298)	0.0071~0.0118	0.0079~0.0138	0.0098~0.0157
M	Stainless Steel	Austenite	135-275	PC5300	199(133 - 265)	0.0071~0.0118	0.0079~0.0138	0.0098~0.0157
		Ferrite series	135-275	PC5300	166(99-232)	0.0051~0.0098	0.0059~0.0118	0.0067~0.0130
K	Cast Iron	Gray cast iron	150-230	PC5300	182(133-232)	0.0051~0.0098	0.0059~0.0118	0.0067~0.0130
		Ductile cast	160~260	PC5300	365(265 - 464)	0.0071~0.0138	0.0079~0.0157	0.0098~0.0177
S	Heat Resisting Steel	Ni pre-hardened	130-400	PC5300	332(232 - 431)	0.0071~0.0138	0.0079~0.0157	0.0098~0.0177
		Ti pre-hardened	130-400	PC5300				
		High hardened	400 above	PC5300	133(66 - 199)	0.0039~0.0079	0.0047~0.0087	0.0051~0.0098

- In case of 8D, reduce the cutting conditions to 40~50% or machine the beginning of hole first.(1.5D)
- In case of interrupted machining, reduce the feed to 30~50% machining around the interrupted part.

Note

- Limited to Stock Standard Drills and Inserts



Don't forget about Korloy's
MEET or **BEAT** Challenge

Korloy will meet or beat any published promotional offer of any competitor.
Ask your Korloy representative for more details or call at 1-888-711-0001

**Current promotional offer cannot be used or combined with other promotions or special offers.
Korloy reserves the right to change or modify the terms and conditions of the promotion.**

Tech Support: 1-844-248-3666