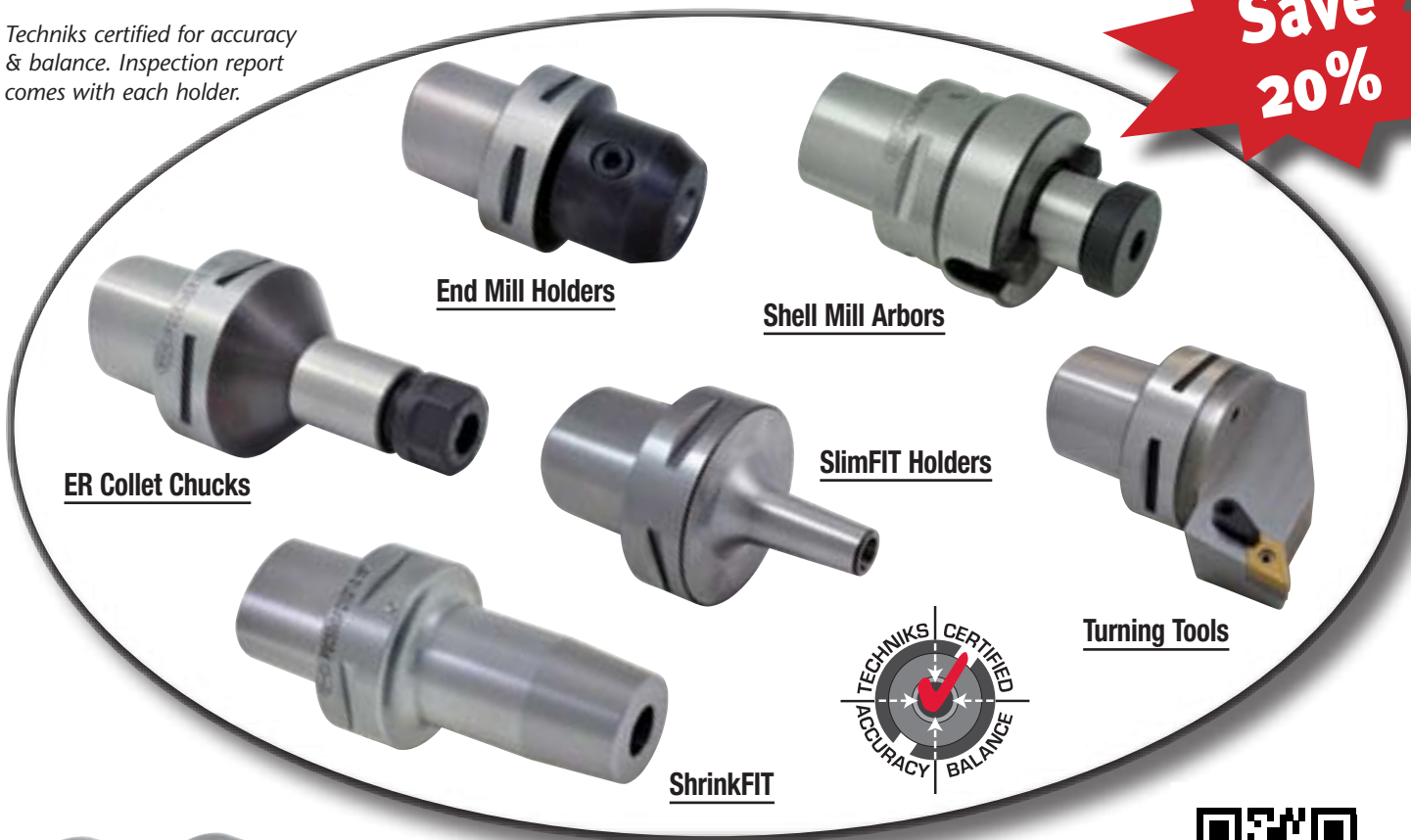


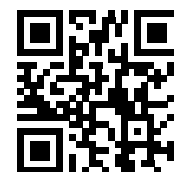
The same great Techniks Certified holders you are used to...
now Capto-Compatible*

Techniks certified for accuracy & balance. Inspection report comes with each holder.



Features

- *Balanced to 25,000 RPM at G2.5*
- *T.I.R. 0.0001" or better*
- *PowerCOAT Nut included*
75% greater clamping power



www.hemlytool.com



Capto-Compatible* C4 ER Collet Chucks

Part No.	Description	Price	20% Off
141.122.16.070	C4 x ER16-70mm	\$385.00	\$308.00
141.122.25.052	C4 x ER25-52mm	\$385.00	\$308.00
141.122.32.054	C4 x ER32-54mm	\$385.00	\$308.00

Capto-Compatible* C5 ER Collet Chucks

Part No.	Description	Price	20% Off
142.122.16.100	C5 x ER16-100mm	\$385.00	\$308.00
142.122.25.055	C5 x ER25-55mm	\$385.00	\$308.00
142.122.32.057	C5 x ER 32-57mm	\$385.00	\$308.00

Capto-Compatible* C6 ER Collet Chucks

Part No.	Description	Price	20% Off
143.122.16.100	C6 x ER16-100mm	\$420.00	\$336.00
143.122.25.060	C6 x ER25-60mm	\$420.00	\$336.00
143.122.32.070	C6 x ER32-70mm	\$420.00	\$336.00
143.122.40.065	C6 x ER40-65mm	\$420.00	\$336.00
143.123.08.600	C6 x ER8M-6"	\$574.00	\$459.20
143.123.11.600	C6 x ER11M-6"	\$574.00	\$459.20
143.123.16.600	C6 x ER16M-6"	\$588.00	\$470.40
143.123.20.600	C6 x ER20M-6"	\$595.00	\$476.00

*Compatible with the Capto tool system. Techniks products are not affiliated with or endorsed by Sandvik AB.

Capto-Compatible* End Mill Holders & ShrinkFIT Holders



Features

- High precision bore (H5) is best in the industry
- Extends cutting tool life
- Balanced to 10,000 RPM at G2.5



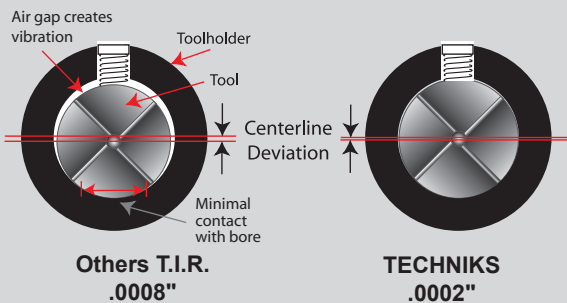
Features

- Maximum T.I.R. only 0.0001"
- Balanced to 25,000 RPM at G2.5
- Superior rigidity and holding power



Techniks H5 Bore Tolerance Extends Tool Life 60%

You lose 10% of cutting tool life for every .0001" of T.I.R.



C4 End Mill Holders

Part No.	Description	Price	20% Off
141.653.54.197	C4 x SLN 1/4"-1.97"	\$350.00	\$280.00
141.653.55.197	C4 x SLN 5/16"-1.97"	\$350.00	\$280.00
141.653.56.197	C4 x SLN 3/8"-1.97"	\$350.00	\$280.00
141.653.58.217	C4 x SLN 1/2"-2.17"	\$350.00	\$280.00
141.653.61.217	C4 x SLN 5/8"-2.17"	\$350.00	\$280.00

C6 End Mill Holders

Part No.	Description	Price	20% Off
143.653.54.217	C6 x SLN 1/4"-2.17"	\$378.00	\$302.40
143.653.55.217	C6 x SLN 5/16"-2.17"	\$378.00	\$302.40
143.653.56.236	C6 x SLN 3/8"-2.36"	\$378.00	\$302.40
143.653.58.236	C6 x SLN 1/2"-2.36"	\$378.00	\$302.40
143.653.61.256	C6 x SLN 5/8"-2.56"	\$378.00	\$302.40
143.653.64.256	C6 x SLN 3/4"-2.56"	\$378.00	\$302.40
143.653.68.315	C6 x SLN 1" -3.15"	\$378.00	\$302.40

C4 ShrinkFIT Chucks

Part No.	Description	Price	20% Off
141.651.54.295	C4 x SF 1/4"-2.95"	\$439.00	\$279.20
141.651.55.295	C4 x SF 5/16"-2.95"	\$439.00	\$279.20
141.651.56.295	C4 x SF 3/8"-2.95"	\$439.00	\$279.20
141.651.58.295	C4 x SF 1/2"-2.95"	\$439.00	\$279.20
141.651.61.315	C4 x SF 5/8"-3.15"	\$439.00	\$279.20

C5 ShrinkFIT Chucks

Part No.	Description	Price	20% Off
142.651.52.315	C5 x SF 1/8"-80mm	\$795.00	\$636.00
142.651.53.315	C5 x SF 3/16"-80mm	\$795.00	\$636.00
142.651.54.315	C5 x SF 1/4"-80mm	\$795.00	\$636.00
142.651.56.315	C5 x SF 3/8"-80mm	\$795.00	\$636.00
142.651.58.315	C5 x SF 1/2"-80mm	\$795.00	\$636.00
142.651.61.315	C5 x SF 5/8"-80mm	\$795.00	\$636.00
142.651.64.315	C5 x SF 3/4"-80mm	\$795.00	\$636.00

C6 ShrinkFIT Chucks

Part No.	Description	Price	20% Off
143.651.52.300	C6 x SF 1/8"-3"	\$378.00	\$302.40
143.651.53.300	C6 x SF 3/16"-3"	\$378.00	\$302.40
143.651.54.315	C6 x SF 1/4"-3.15"	\$483.00	\$386.40
143.651.55.315	C6 x SF 5/16"-3.15"	\$483.00	\$386.40
143.651.56.315	C6 x SF 3/8"-3.15"	\$483.00	\$386.40
143.651.58.315	C6 x SF 1/2"-3.15"	\$483.00	\$386.40
143.651.61.335	C6 x SF 5/8"-3.35"	\$483.00	\$386.40
143.651.64.335	C6 x SF 3/4"-3.35"	\$483.00	\$386.40
143.651.68.354	C6 x SF 1"-3.54"	\$483.00	\$386.40
143.651.72.374	C6 x SF 1-1/4"-3.74"	\$483.00	\$386.40

*Compatible with the Capto tool system. Techniks products are not affiliated with or endorsed by Sandvik AB.

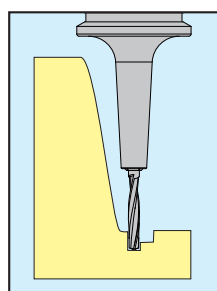
Capto-Compatible* SlimFIT & Face Mill Holders



Features

- **Maximum T.I.R. 0.0001"**
- **Balanced to 25,000 RPM at G2.5**
- **Nose diameter only .55"**
- **SlimFIT collets fit shank sizes 3/32" – 1/4"**

Internal drawbar eliminates need for clamping nut to permit narrow nose diameter. 4° collet is tightened by an internal drawbar that provides greater holding power and improved accuracy.



Great clearance



Coolant-thru

Features

- **H6 arbor tolerance for less chatter and better tool life**
- **Compatible with all coolant-thru face mills**
- **Each arbor is lab certified for accuracy**

C4, C5, C6 Face Mill Arbors

Part No.	Description	Price	20% Off
141.151.64.100	C4 x FMA 3/4"-1"	\$385.00	\$308.00
142.151.68.157	C5 x FMA 1"-1.57"	\$385.00	\$308.00
143.151.64.100	C6 x FMA 3/4"-1"	\$483.00	\$386.40
143.151.68.200	C6 x FMA 1"-2"	\$420.00	\$336.00
143.151.72.200	C6 x FMA 1-1/4"-2"	\$420.00	\$336.00

C4 & C6 SlimFIT Collet Chucks

Part No.	Description	Price	20% Off
141.648.06.075	C4 x SBL 6-75mm	\$385.00	\$308.00
143.648.06.080	C6 x SBL6-80mm	\$420.00	\$336.00

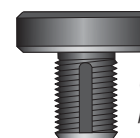


SlimFIT Inch Size Collets

Part No.	Description	Price	20% Off
18851-3/32	SlimFIT 6 - 3/32" collet	\$60.00	\$48.00
18851-7/64	SlimFIT 6 - 7/64" collet	\$60.00	\$48.00
18851-1/8	SlimFIT 6 - 1/8" collet	\$60.00	\$48.00
18851-9/64	SlimFIT 6 - 9/64" collet	\$60.00	\$48.00
18851-5/32	SlimFIT 6 - 5/32" collet	\$60.00	\$48.00
18851-11/64	SlimFIT 6 - 11/64" collet	\$60.00	\$48.00
18851-3/16	SlimFIT 6 - 3/16" collet	\$60.00	\$48.00
18851-13/64	SlimFIT 6 - 13/64" collet	\$60.00	\$48.00
18851-7/32	SlimFIT 6 - 7/32" collet	\$60.00	\$48.00
18851-15/64	SlimFIT 6 - 15/64" collet	\$60.00	\$48.00
18851-1/4	SlimFIT 6 - 1/4" collet	\$60.00	\$48.00

CoolBLAST Face Mill Arbor Coolant Option

- **Use with Techniks face mill arbors**
- **Compatible with all coolant thru face mills**
- **Up to 1,500 PSI**



CoolBLAST arbor screw provides coolant path.

CoolBLAST Coolant Arbor Screws

Part No.	Description	Price	20% Off
WF.C1-0.75	CoolBLAST arbor screw 3/4"	\$25.00	\$20.00
WF.C1-1	CoolBLAST arbor screw 1.0"	\$29.00	\$23.20
WF.C1-1.25	CoolBLAST arbor screw 1-1/4"	\$35.00	\$28.00

*Compatible with the Capto tool system. Techniks products are not affiliated with or endorsed by Sandvik AB.

Capto-Compatible* C6 External Turning Tools

Features

- High accuracy & repeatability
- Nexus high-performance inserts



C6 MCLN
Takes Nexus CN_43 Inserts

Part No.	Description	Price	20% Off
143.475.12L.065	C6-MCLNL-DX12	\$454.00	\$363.20
143.475.12R.065	C6-MCLNR-DX12	\$454.00	\$363.20



C6 MDJN
Takes Nexus DN_43 Inserts

Part No.	Description	Price	20% Off
143.476.15L.075	C6-MDJNL-EX15	\$454.00	\$363.20
143.476.15R.075	C6-MDJNR-EX15	\$454.00	\$363.20



C6 MWLN
Takes Nexus WN_43 Inserts

Part No.	Description	Price	20% Off
143.478.08L.065	C6-MWLN-EX08	\$454.00	\$363.20
143.478.08R.065	C6-MWLN-EX08	\$454.00	\$363.20



C6 MVLN
Takes Nexus VN_33 Inserts

Part No.	Description	Price	20% Off
143.479.16L.075	C6-MVLNL-EX16	\$454.00	\$363.20
143.479.16R.075	C6-MVLNR-EX16	\$454.00	\$363.20



C6 MDNN
Takes Nexus DN_43 Inserts

Part No.	Description	Price	20% Off
143.481.15N.100	C6-MDNNN-H15	\$454.00	\$363.20

Nexus

high-performance inserts



Nexus

NEW!

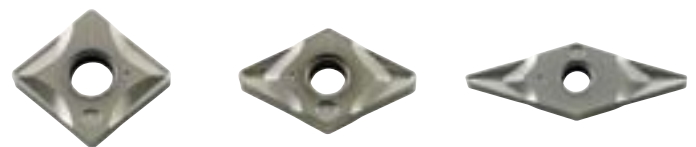
- Advanced technology PVD insert increases performance & insert life
- True high-performance in many materials including: P-M-K-S-H

Nexus Turning Inserts

Part No.	Description	Radius	Price	20% Off
6607029	CNMG431NN-LT10	0.016	\$8.85	\$7.08
6607033	CNMG432NN-LT10	0.031	\$8.85	\$7.08
6607037	CNMG433NN-LT10	0.047	\$8.85	\$7.08
6607041	CNMP432NN-LT10	0.031	\$8.85	\$7.08
6607045	CNMP433NN-LT10	0.047	\$8.85	\$7.08
7607069	DNMG431NN-LT10	0.016	\$11.70	\$9.36
7607073	DNMG432NN-LT10	0.031	\$11.70	\$9.36
7607077	DNMG433NN-LT10	0.047	\$11.70	\$9.36
8607241	VNMG331NN-LT10	0.016	\$11.75	\$9.40
8607245	VNMG332NN-LT10	0.031	\$11.75	\$9.40
4607257	WNMG431NN-LT10	0.016	\$9.90	\$7.92
4607261	WNMG432NN-LT10	0.031	\$9.90	\$7.92
4607277	WNMP432NN-LT10	0.031	\$9.90	\$7.92

Use Nexus LT10 Grade inserts with the following materials:

P = steel, M = stainless, K = cast iron, S = high temp alloys,
H = hardened material, N = aluminum & alloys



Nexus Inserts for Turning Aluminum

N = aluminum & alloys

Part No.	Description	Radius	Price	20% Off
6607901	CNGG431-ALU	0.016	\$10.30	\$8.24
6607905	CNGG432-ALU	0.031	\$10.30	\$8.24
7607909	DNGG331-ALU	0.016	\$10.30	\$8.24
7607913	DNGG332-ALU	0.031	\$10.30	\$8.24
8607921	VNGG331-ALU	0.016	\$11.75	\$9.40
8607925	VNGG332-ALU	0.031	\$11.75	\$9.40

*Compatible with the Capto tool system. Techniks products are not affiliated with or endorsed by Sandvik AB.

HEADQUARTERS: HEMLY TOOL SUPPLY INC.

9700 Madison Road, Montville, OH 44064

1-800-445-1068 • Tel: 440-968-3228

Fax: 440-968-3611 • e-mail: sales@hemlytool.com

CT BRANCH: HEMLY TOOL SUPPLY OF CT, LLC

111 Pane Road, Newington, CT 06111

1-888-474-1300 • Tel: 860-436-4570

Fax: 860-436-4807 • e-mail: jon@hemlytool.com