

# BohrSTAR Kits – Range: 0.314" to 8.27"

## BohrSTAR Kits Offer Outstanding Performance & Value

### BohrSTAR 100 Triangular Kit

Range: 0.314" to 3.94"

Order No. 6991235



**\$1,925**



Kit Includes Triangular Inserts:

- 2 Pcs. TCMT 1.2\_
- 3 Pcs. TCMT 1.8\_
- 2 Pcs. TCMT 32.5\_

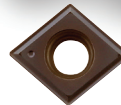
### BohrSTAR 100 Rhombic Kit

Range: 0.314" to 3.94"

Order No. 6991220



**\$1,925**



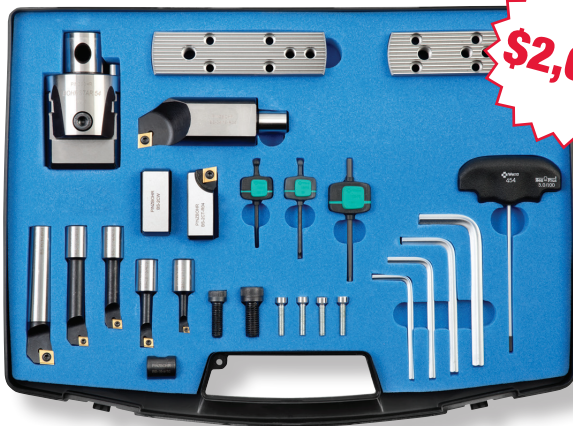
Kit Includes Rhombic Inserts:

- 1 Pc. EPMT 1.5\_
- 3 Pcs. CCMT 21.5\_
- 3 Pcs. CCMT 32.5\_

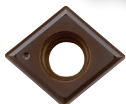
### BohrSTAR 170 Rhombic Kit

Range: 0.314" to 6.69"

Order No. 6991230



**\$2,665**



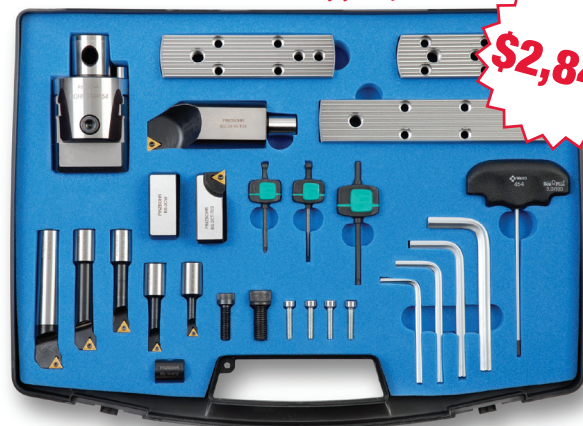
Kit Includes Rhombic Inserts:

- 1 Pc. EPMT 1.5\_
- 3 Pcs. CCMT 21.5\_
- 3 Pcs. CCMT 32.5\_

### BohrSTAR 210 Triangular Kit

Range: 0.314" to 8.27"

Order No. 6991240



**\$2,840**



Kit Includes Triangular Inserts:

- 2 Pcs. TCMT 1.2\_
- 3 Pcs. TCMT 1.8\_
- 2 Pcs. TCMT 32.5\_

**HEADQUARTERS**  
**HEMLY TOOL SUPPLY INC.**  
9700 Madison Road  
Montville, OH 44064  
**1-800-445-1068**  
**Tel: 440-968-3228**  
**Fax: 440-968-3611**

**Hemly**  
TOOL SUPPLY INC.

[www.hemlytool.com](http://www.hemlytool.com)  
e-mail: [sales@hemlytool.com](mailto:sales@hemlytool.com)

**CT BRANCH**  
**HEMLY TOOL SUPPLY OF CT, LLC**  
111 Pane Road  
Newington, CT 06111  
**1-888-474-1300**  
**Tel: 860-436-4570**  
**Fax: 860-436-4807**

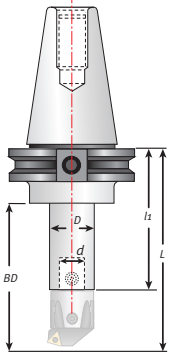
# High Precision Toolholders & Inserts for BohrSTAR Kits



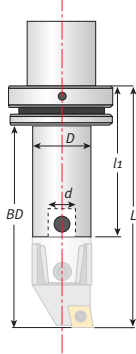
- CAT40, CAT50, BT40, BT50, HSK63A, HSK100A, Weldon, and R8
- Compatible with our 54mm boring heads, adapters, and reducers
- Exceed industry standards for taper accuracy and concentricity

Use the drawings to select your toolholder size.

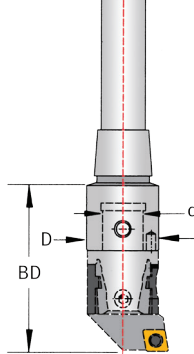
CAT & BT Styles



HSK Styles



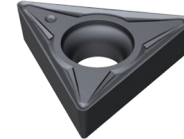
Weldon & R8 Styles



Toolholders come with Coupling Screw installed. Order 6811550 for replacements.



CCMT



TCMT



EPMT

## Inserts for BohrSTAR Kits

Part No.	Description	Grade	Kit
3663311	CCMT 2(1.5)0 HF	251	Rhombic 100 & 170
3664411	CCMT 2(1.5)1 NN	LT 10	Rhombic 100 & 170
3668011	CCMT 2(1.5)1 NN	LT 1000	Rhombic 100 & 170
3663399	CCMT 2(1.5)2 HM	251	Rhombic 100 & 170
3663344	CCMT 3(2.5)0 HF	251	Rhombic 100 & 170
3664413	CCMT 3(2.5)1 NN	LT 10	Rhombic 100 & 170
3668021	CCMT 3(2.5)1 NN	LT 1000	Rhombic 100 & 170
3664416	CCMT 3(2.5)2 NN	LT 10	Rhombic 100 & 170
3668026	CCMT 3(2.5)2 NN	LT 1000	Rhombic 100 & 170
3664419	CCMT 3(2.5)2 WM	LT 10	Rhombic 100 & 170
3934030	EPMT 1.5(3).5 PM5	5625	Rhombic 100 & 170
3533010	TCMT 1.2(1).50	5615	Triangular 100 & 210
3533020	TCMT 1.2(1)1	5625	Triangular 100 & 210
3563311	TCMT 1.8(1.5)0 HF	251	Triangular 100 & 210
3533033	TCMT 1.8(1.5)1 HM	251	Triangular 100 & 210
3563388	TCMT 1.8(1.5)2 HM	251	Triangular 100 & 210
3563399	TCMT 1.8(1.5)1 HF	251	Triangular 100 & 210
3533030	TCMT 1.8(1.5)1 PF4	5625	Triangular 100 & 210
3564438	TCMT 3(2.5)1 NN	LT 10	Triangular 100 & 210
3568851	TCMT 3(2.5)1 NN	LT 1000	Triangular 100 & 210
3564441	TCMT 3(2.5)2 NN	LT 10	Triangular 100 & 210
3568861	TCMT 3(2.5)2 NN	LT 1000	Triangular 100 & 210
3533090	TCMT 3(2.5)2 PM4	5625	Triangular 100 & 210
3561774	TCMT 3(2.5)3 NN	LT 10	Triangular 100 & 210
3561929	TCMT 3(2.5)3 NN	LT 1000	Triangular 100 & 210

## Toolholders for BohrSTAR Kits

Part No.	Description	D (mm)	d (mm)	BD
6134310	CT-340-54-120	54	28	4.724"
6134315	CT-340-54-160	54	28	6.299"
6134320	CT-340-54-200	54	28	7.874"
6141305	CT-350-54-90	54	28	3.543"
6141310	CT-350-54-160	54	28	6.299"
6141315	CT-350-54-200	54	28	7.874"
6140400	BT-340-54-90	54	28	3.543"
6140425	BT-340-54-160	54	28	6.299"
6140450	BT-340-54-200	54	28	7.874"
6150375	BT-350-54-90	54	28	3.543"
6150400	BT-350-54-160	54	28	6.299"
6150425	BT-350-54-200	54	28	7.874"
6155635	HSK-63A-54-110	54	28	4.331"
6155105	HSK-100A-54-110	54	28	4.331"
6165343	B-20-54-110-3/4	54	12	4.331"
6165103	B-25-54-110-1.0	54	15	4.331"
6165144	B-32-54-110-1-1/4	54	24	4.331"
6165123	B-40-54-110-1-1/2	54	24	4.331"
6165805	R8-54-110	54	28	4.331"

**HEADQUARTERS**  
**HEMLY TOOL SUPPLY INC.**  
 9700 Madison Road  
 Montville, OH 44064  
**1-800-445-1068**  
**Tel: 440-968-3228**  
**Fax: 440-968-3611**

**Hemly**  
**TOOL SUPPLY INC.**

**www.hemlytool.com**  
 e-mail: sales@hemlytool.com

**CT BRANCH**  
**HEMLY TOOL SUPPLY OF CT, LLC**  
 111 Pane Road  
 Newington, CT 06111  
**1-888-474-1300**  
**Tel: 860-436-4570**  
**Fax: 860-436-4807**