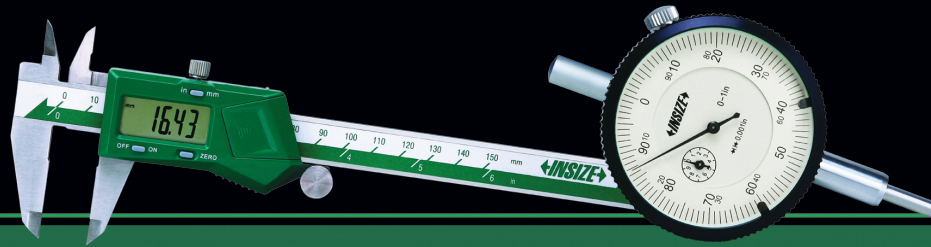




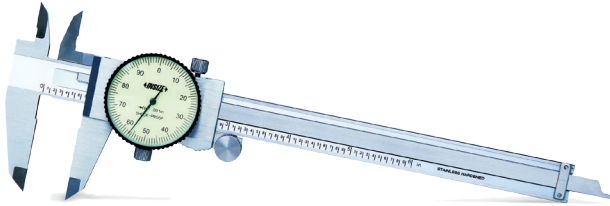
Precision Measuring Instruments

www.insize-usa.com



# TOOLS THAT MEASURE UP!

## Dial Calipers



- ▶ Graduation: 0.001"
- ▶ Meets DIN862 standard, hardened stainless steel construction, satin chrome clamp and thumb wheel
- ▶ Shock proof dial indicator, adjustable bezel with bezel locking clamp
- ▶ For outside, inside, depth and step measurements
- ▶ Supplied in fitted storage case

Range	EDP #	INSIZE #	Price
0-6"	816028	1311-6	\$ 53.50
0-8"	816030	1311-8	71.00
0-12"	816032	1311-12	124.50

## Electronic Calipers



- ▶ Resolution: 0.0005"/0.01mm
- ▶ Buttons: zero, on/off, inch/mm
- ▶ Automatic power off
- ▶ Battery CR2032
- ▶ Meets DIN862 standard
- ▶ Stainless steel construction
- ▶ Data output
- ▶ Supplied in fitted storage case

Range	EDP #	INSIZE #	Price
0-6"/0-150mm	817000	1108-150	\$ 54.10
0-8"/0-200mm	817001	1108-200	80.00
0-12"/0-300mm	817002	1108-300	119.90

## Outside Micrometers



- ▶ Graduation: 0.0001"
- ▶ Meets DIN863 standard, painted frame, ratchet stop, spindle lock, carbide tips, adjusting wrench
- ▶ Supplied in fitted storage case



### Sets

- ▶ Micrometers over 1"/25mm are supplied with a setting standard

Range	EDP #	INSIZE #	Price
0-1"	816564	3203-1A	\$ 34.70
0-6" (6 pcs.)	816592	3203-66A	263.70
0-12" (12 pcs.)	816596	3203-1212A	745.60

## Electronic Outside Micrometer



- ▶ Resolution: 0.00005"/0.001mm
- ▶ Buttons: on/off, set, inch/mm, ABS/INC (absolute and incremental measurement)
- ▶ Auto power off
- ▶ SR44 battery
- ▶ Meets DIN863 standard, painted and insulated frame, ratchet friction thimble, spindle lock, with battery cover wrench, carbide tips
- ▶ Spherical anvil included allows tube thickness measurements
- ▶ Supplied in fitted storage case

Range	EDP #	INSIZE #	Price
0-1"/0-25mm	816500	3109-25E	\$ 99.90

## DISTRIBUTED BY:

**HEADQUARTERS**  
**HEMLY TOOL SUPPLY INC.**  
 9700 Madison Road  
 Montville, OH 44064  
**1-800-445-1068**  
**Tel: 440-968-3228**  
**Fax: 440-968-3611**



**www.hemlytool.com**  
 e-mail: sales@hemlytool.com

**CT BRANCH**  
**HEMLY TOOL SUPPLY OF CT, LLC**  
 111 Pane Road  
 Newington, CT 06111  
**1-888-474-1300**  
**Tel: 860-436-4570**  
**Fax: 860-436-4807**



# INSIZE TOOLS THAT MEASURE UP!

## Dial Indicator

- ▶ Graduation: 0.001"
- ▶ Meets DIN878 or ANSI B89.1.10 standard
- ▶ Stem diameter 3/8"
- ▶ Bezel diameter 2.36"
- ▶ Lug back
- ▶ Bezel locking clamp and tolerance index
- ▶ Aluminum body
- ▶ Continuous reading dial 0-100
- ▶ Contact point thread: #4-48UNF
- ▶ Supplied in fitted storage case

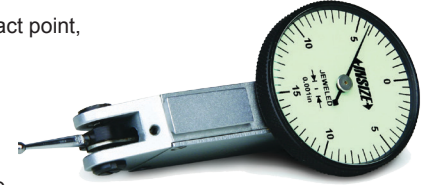


INSIZE Indicators available from 0.25" to 4"

Range	EDP #	INSIZE #	Price
0-1"	816158	2307-1	\$ 32.10

## Dial Test Indicators

- ▶ Meets DIN2270 or BS2795 standard
- ▶ Satin chrome finish, brass body, anti-magnetic
- ▶ Jeweled bearing, shock-proof
- ▶ Interchangeable carbide contact point, 0.0787"/2mm diameter ball, supplied with wrench
- ▶ Probe length: 0.530"/13.5mm
- ▶ Two holding stems: 5/32"/4mm and 3/8"/8mm
- ▶ Supplied in fitted storage case



Range	Graduation	Bezel Diameter	EDP #	INSIZE #	Price
0-0.03"	0.0005"	1.18"	816170	2380-35	\$ 86.20
0-0.008"	0.0001"	1.18"	816172	2380-301	99.90
0-0.008"	0.0001"	1.48"	282861	2381-301	106.10

## Magnetic Stands

### Dual Stem with Fine Adjustment

- ▶ Main stem: Ø0.472" x 6.930"
- ▶ Assistant stem: Ø0.394" x 6.300"
- ▶ Clamp hole: 3/8" diameter plus 8mm sleeve
- ▶ For dial indicators with lug back or flat back
- ▶ Base: 2.4" x 2" x 2.2" with on/off switch



Magnetic Force (lbf)	132
EDP #	816252
INSIZE #	6201-60
Price	\$ 26.20

### Flex Arm

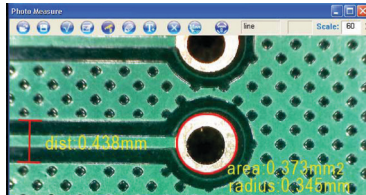
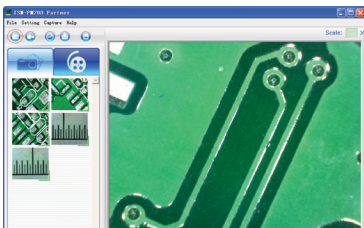
- ▶ Flexible arm
- ▶ Overall arm length: 13"
- ▶ Single lever operation to lock arm in place
- ▶ For dial indicators with stem diameter 3/8" and 8mm
- ▶ Base: 2.4" x 2" x 2.2" with on/off switch



Magnetic Force (lbf)	176
EDP #	282892
INSIZE #	6207-80A
Price	\$ 53.00

## Digital Microscope with Standard Stand and Measuring Software

- ▶ Records photos and video
- ▶ Supplied with measuring software
- ▶ Built in adjustable LED illuminator
- ▶ Two step adjustable focus with 10X to 200X magnification
- ▶ Image sensor: 1.3 mega pixels
- ▶ Resolution: 1280 x 1024
- ▶ Power Supply: 5V DV from USB port
- ▶ Includes stand, two calibration rules – graduations 0.1mm and 1mm, focus ring supports for 80X/150X and 60X/200X magnification, software CD (requires Windows XP SP2, Vista or Windows 7 operating system)



Screen capture of photo measurement



Laptop not included



Shown with Standard stand

Description	EDP #	INSIZE #	Price
Microscope with Standard Stand (without swivel) and Measuring Software	285000	ISM-PM200SA	\$ 379.00



Precision Measuring Instruments

www.insize-usa.com

JUNE 2014

INSIZE USA

CALL TO ORDER TODAY!

PRICES SUBJECT TO CHANGE WITHOUT NOTICE