

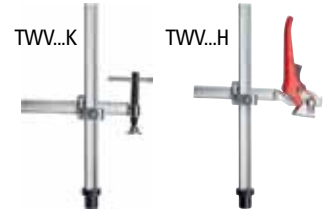
VARIETY

Simply better.

Distributed by:



Welding table clamps, variable throat depth, TWV



- Infinitely adjustable throat depth
- Precision clamping with variable height and adjustable throat depth
- Tempered profile and sliding arm for dependable clamping
- Available in 3 handle variants: 2-component plastic handle; T-Bar (each with smooth-running ACME threaded spindle and tool free pressure plate replacement); or lever handle with an ratcheting mechanism for controlled, fast, vibration-proof clamping.

FROM **48⁹⁹**

	Handle Style	Hole Diameter	Clamping Capacity	Nominal Throat Depth	Rail Profile	Clamping Force	Price
TWV16-20-15K	T-Bar	16 mm	8"	1 3/16" - 6"	7/8" - 3/8"	550 lbs	\$48.99
TWV16-20-15H	Lever	16 mm	8"	2 3/8" - 6"	7/8" - 3/8"	550 lbs	\$66.49
TWV28-30-17K	T-Bar	28 mm	12"	1 3/16" - 6 7/8"	1 1/8" - 7/16"	1100 lbs	\$59.99
TWV28-30-17H	Lever	28 mm	12"	4 3/16" - 6 7/8"	1 1/8" - 7/16"	1100 lbs	\$82.99

Note: Clamping force calculated at a height of 2-3 In on a solid all-steel welding table platform

All-steel bar clamps for industrial application



FROM **64⁹⁹**

Medium duty SGL series

- Made in Germany
- Includes standard rail profile, heavy duty pad.



	Clamping Capacity	Throat Depth	Clamping Force	Price
SGL-8	8"	4 3/4"	1800 lbs	\$64.99
SGL-12	12"	4 3/4"	1800 lbs	\$73.99



FROM **89⁹⁹**

Regular duty SQ series

- Top selling series
- Great size and strength
- Includes standard rail profile, heavy duty pad.



	Clamping Capacity	Throat Depth	Clamping Force	Price
SQ-12	12"	5 1/2"	2660 lbs	\$89.99
SQ-20	20"	5 1/2"	2660 lbs	\$119.99



FROM **179²⁵**

Heavy duty STB series

- German made
- Classic profiled rails, hardened spindles (19 mm hex head)
- Great for heavy duty applications on a tighter budget



	Clamping Capacity	Throat Depth	Clamping Force	Price
STB-12	12"	7"	4880 lbs	\$179.25
STB-18	18"	7"	4880 lbs	\$194.99

Ball-in-socket technology for greatly extended clamp life and, at full pressure... by BESSEY®. Patented.



We also carry service parts and accessories



NEWSLETTER SIGN UP!

Email your request to info@besseytools.com or scan the QR code!



Join us on...

www.facebook.com/BesseyToolsNorthAmerica
www.twitter.com/BesseyTools
www.youtube.com/user/BesseyTools
www.besseytools.com



Induction bearing heaters

- Extend bearing life and cut operating cost by eliminating hammering and pounding to cold-mount bearings.
- Works on bearings, sprockets, gears, couplings and sleeves.
- Demagnetizes bearings – easy to use, ready in minutes.
- Single phase 60 hz units. 50 hz versions available as special request.



FROM **1549⁴⁶**

SC 110V

- Bearing capacity: 4" x 11" O.D. (14" OD with optional raising blocks).

	Voltage	Standard Cross Bars	Optional Cross Bars	Price
SC 110V	120V (17 amp)	¾, 2	1 ¼	\$1549.46



*Bearings not included

BC 240V, or 480V

- Bearing capacity: 7 ½" x 22" O.D. (32"OD with optional raising blocks).

FROM **3099⁴⁶**

	Voltage	Standard Cross Bars	Optional Cross Bars	Price
BC 220V	240V (30 amp)	1 ¼, 3	1, 2	\$3099.46
BC 440V	480V (20 amp)	1 ¼, 3	¾, 1, 2	\$3499.49

Industrial magnets



Double magnetic square, WMS

- Double magnets joined at a pivot point
- Can hold at any angle.

	Pull	Nominal Dimensions	Pre-set Angles	Price
WMS-4	2x48.5lbs	6 ½" x 3 ¾" x 9 ½"	0 to 180°	\$14.29



Multi-angle magnetic square, WMS

- Quality magnet for fast, simple set-up.

	Pull	Nominal Dimensions	Pre-set Angles	Price
WMS-6	35 lbs	4" x 2 ½" x 9 ¼"	30/45/60/75/90°	\$7.78



Arrowhead magnetic square, WMS

- Quality magnet for fast, simple set-up.

	Pull	Nominal Dimensions	Pre-set Angles	Price
WMS-7	41 lbs	4 ¾" x 3 ¼" x 9 ½"	90/45°	\$7.78

FROM **7⁷⁸**



Vacuum base vise — swivelling

- Portable hobbyist vise
- Attach securely to any non-porous surface
- Release locking ring to rotate, swivel, re-lock.
- Non-slip rubber pads for vise jaws.

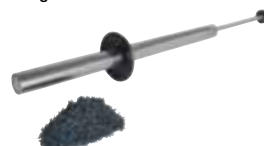
	Jaw Width	Jaw Opening	Price
BV-VB	2 ¾"	2 ¾"	\$26.74



MagWand, MW

- Collect up to 12 lbs of swarf in a pass for a cleaner safer welding and machine shop.
- Rolls easily over industrial work surfaces and dumps waste by simply pulling and sliding the magnetic insert.

	Description	Price
MW-1	15 ½" length	\$39.99



FROM **39⁹⁹**



FROM **17³⁴**

540 series ductile alloy C-clamps

- Made of high tensile ductile alloy casting for excellent strength in a cast clamp.
- Black oxide spindle resists corrosion.

	Clamping Capacity	Throat Depth	Clamping Force	Price
540-4	0-4"	2 ½"	2150 lbs	\$17.34
540-6	0-6"	2 ¾"	2450 lbs	\$27.19
540-8	0-8"	3 ¼"	2750 lbs	\$31.99



FROM **11⁹⁹**

Clutch style bar clamp, GSCC

- Regular-duty clamp for cabinet makers, woodworkers, metal workers and homecrafters.
- Easy-to-use clamps are suitable for "close quarters" clamping.
- Durable powder coated cast-iron fixed and sliding jaws.
- Safety by design – nickel plated, drawn and serrated rail.
- 2 piece slip-clutch plates keep the jaw sturdy and in place.
- Non-marring protective pads on the top and bottom jaws.
- 2K comfort handle



	Clamping Capacity	Throat Depth	Clamping Force	Price
GSCC3.506+2K	6"	3 1/2"	1100 lbs	\$11.99
GSCC3.512+2K	12"	3 1/2"	1100 lbs	\$13.97
GSCC3.518+2K	18"	3 1/2"	1100 lbs	\$14.97
GSCC3.524+2K	24"	3 1/2"	1100 lbs	\$15.97
GSCC3.536+2K	36"	3 1/2"	1100 lbs	\$19.97

Small and very handy



FROM **4³⁹**



Light duty, zinc die cast, step over bar clamp, LMU

- Small, light weight and quality made of quality steel drawn in a single piece for durability and strength.
- U shaped bar clamps over small obstructions and applies the clamping force where it's needed.
- Die-cast zinc sliding arm is light, stable and break-resistant.
- Two plastic pressure caps protect the work piece surface.



	Clamping Capacity	Throat Depth	Clamping Force	Price
LMU2.004	4"	2"	330 lbs	\$4.39



FROM **5⁹⁹**



VarioClippix® variable spring clamps, XV

- Unique sliding jaw adjusts for a much larger clamping capacity than a regular spring clamp.
- Rapid-action, polyamide, sliding top jaw infinitely adjusts to fit the project... the clamping capacity of a 4" spring clamp with the comfort of a 2" clamp.
- Ergonomic 2-component handle – soft, anti-slip, comfort handle.
- Soft-touch pads protect workpieces and eliminate marring of work.

	Clamping Capacity	Throat Depth	Price
XV5-100	4"	2"	\$5.99

Spring clamps



Steel spring clamps, XM

- Made with vinyl tips to prevent marring and vinyl handles for a non-slip grip.
- Heavy duty spring for a tight fit and nickel plating to prevent corrosion.

	Clamping Capacity	Throat Depth	Price
XM3	1"	1 1/4"	\$2.15
XM5	2"	2 1/4"	\$3.08
XM7	3"	3 5/16"	\$5.49
XM10	4"	5"	\$14.41

FROM **2¹⁵**

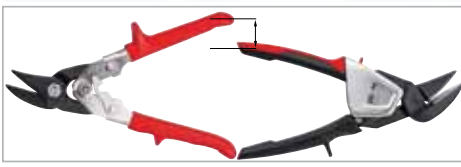
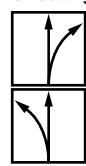


NEW
FROM **34⁷⁹**

The latest generation of leverage snips Multi-use aviation snip, D39ASS

- Innovative new snips feature more capacity, precision and comfort with easier operation.
- Easier to hold – optimised handle angle for a full unit comfort-grip for maximum cutting force.
- Smooth cutting action – joint area with sintered steel insert greatly reduces friction, extending tool life.
- Central latch for easy operation, without a change in grip.
- Cut straight, cut round, cut easier – compact forged jaws permit high-precision cutting – while the shape of the forged jaw allows work to flow past the user's hand instead of towards for sustained (... and safer) cutting.
- Reduced handle opening for optimised handling and an even cutting length.
- Available in right or left cutting versions.

	Overall Length	Blade Length	Cutting Capacity (carbon steel)	Price
D39ASS-SB	9"	1 3/16"	18 gauge	\$34.79
D39ASSL-SB	9"	1 3/16"	18 gauge	\$34.79





VARIETY

Simply better.

Distributed by:



FROM
19⁹⁹

Auto-adjust jaw height = rapid clamping

1 Auto-adjustment of the jaw height

The BESSEY® Auto-Adjust Toggle Clamp self adjusts to variations in workpiece height while maintaining clamping force.

2 Adjustable clamping force

The integrated clamping force adjustment screw can vary the applied clamping force in a range.

3 Adaptable base plate:

Holes are sized and spaced for easy mounting and flexibility in metric and imperial.

4 Large ergonomic handle

Soft insets for maximum comfort.

Toggle Video



Vertical toggle with open arm and horizontal base plate

Model #	Opening	Nominal Clamping Force Range	Holding Capacity	Fastener	Price
STC-VH20	0-13/16"	25 - 250 lbs.*	450 lbs.	3/16" or M5	\$19.99
STC-VH50	0-1 9/16"	25 - 550 lbs.*	700 lbs.	1/4" or M6	\$20.99

Horizontal with flanged base

Model #	Opening	Nominal Clamping Force Range	Holding Capacity	Fastener	Price
STC-HH20	0-13/16"	25 - 250 lbs.*	450 lbs.	3/16" or M5	\$19.99
STC-HH50	0-1 9/16"	25 - 550 lbs.*	700 lbs.	1/4" or M6	\$20.99
STC-HH70	0-2 3/8"	25 - 550 lbs.*	700 lbs.	1/4" or M6	\$22.99

Inline with flanged base

Model #	Opening	Nominal Clamping Force Range	Holding Capacity	Fastener	Price
STC-IHH15	0-3/8"	25 - 250 lbs.*	450 lbs.	3/16" or M5	\$21.99
STC-IHH25	0-5/8"	25 - 550 lbs.*	700 lbs.	1/4" or M6	\$23.49

Inline with angled base plate

Model #	Opening	Nominal Clamping Force Range	Holding Capacity	Fastener	Price
STC-IHA15	0-3/8"	25 - 250 lbs.*	450 lbs.	3/16" or M5	\$21.99



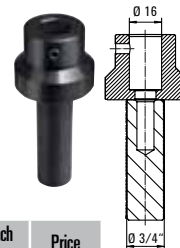
NEW



9⁹⁹

Workbench adapter, 16mm (TW16)

- Accessory for BESSEY® TWV and TW clamping elements with 16 mm base
- Suitable for all common workbenches with a 3/4 inch hole system
- Can be used without tools



Model #	Hole Diameter	Workbench hole size	Price
TW16AW19	16 mm	3/4"	\$9.99



NEWSLETTER SIGN UP!

Email your request to info@besseystools.com or scan the QR code!

Join us on...

- www.facebook.com/BesseyToolsNorthAmerica
- www.twitter.com/BesseyTools
- www.youtube.com/user/BesseyTools
- www.besseystools.com

