



Shrink Fit System



Complete Shrink Fit Solution to your applications



ez Shrink System



EZ-SHRINK-EZ3K ez Shrink Unit

3kw, 1/8-3/4 Capacity,
220V, 20A Single Phase
User adjustable settings.



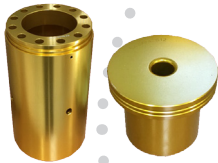
Heating Time
30 seconds ~

EZ-COOL-EZ3W-KIT ez Cooling Unit

2 Station
110V, 16A



Cooling Time
30 seconds ~



EZ-BASE EZ-BASE-S
Bases



EZ-TOOL-TRAY
Storage Tray



EZ-COOL-EXT
Extension



EZ-GLOVE
Safety Gloves



Pre-programmed and user adjustable, simple and effective.



One of the highest quality shrink fit line doesn't break your bank.



- Shrinking time cycle from 20 to 35 seconds.
- Cooling time cycle from 30 seconds to 1 minute.
(depending on the geometry)



Easy operation with a user-friendly control panel.



Complete package solution with after-sales service second to none.

SD - Shrink Fit Holders



Premium Performance

- **Ultimate Precision** 0.0001" TIR Guaranteed @ Bore
- **Long Lasting** Manufactured from ISO-40CrMoV5 (H13) material, tools double tempered at 1050°F (566°C), heat treated for optimum elasticity and tool life.
- **Powerful** Toleranced and ground for 10,000 lbs of pull out force.
- **Performance Milling** Designed for performance milling with neutral flute geometry, not designed for hi-helix applications.
- **High Speed** Dynamically Balanced for G2.5 @ 25,000 RPM's
- Will work in most shrink machines.
- All holders are 100% inspected on Air/Electronic gaging and the ID is ground for a maximum of 3 microns (0.0001") Runout (TIR) in the Bore.



Jet-Blast options to fit your application

- Any standard Shrink can be modified from stock.
- Adding a "J" to the end of the part number will provide you with 2 coolant ports*.
- For additional coolant ports, add "J 4-Port" to the part number*.

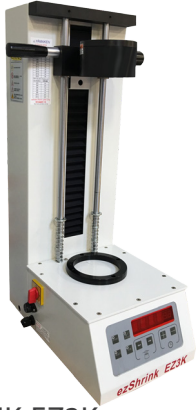


*Additional fees will apply.
Contact our customer service department for details and pricing.

ez Shrink Pack

Complete Shrink Fit Solution Package

What's included in the package:



EZ-SHRINK-EZ3K

ez Shrink Unit

3kw, 1/8-3/4 Capacity,
220V, 20A Single Phase
User adjustable settings.

Heating Time
30 seconds ~



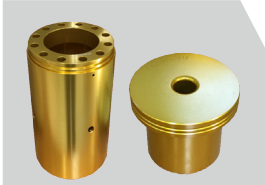
EZ-COOL-EZ3W-KIT

ez Cooling Unit

2 Station
110V, 16A

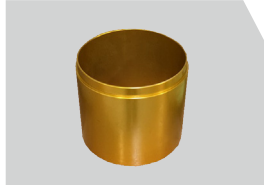
Cooling Time
30 seconds ~

2 Bases



EZ-BASE EZ-BASE-S

1 Extension



EZ-COOL-EXT

Safety Gloves



EZ-GLOVE

Storage Tray



EZ-TOOL-TRAY

10 Shrink Fit Holders

Pick any 10 standard lengths SD holders listed in the back page



▼ ▼ Select your package ▼ ▼

CAT40

FOR ONLY:

\$6,200

CAT50

FOR ONLY:

\$7,200

HSK 63A

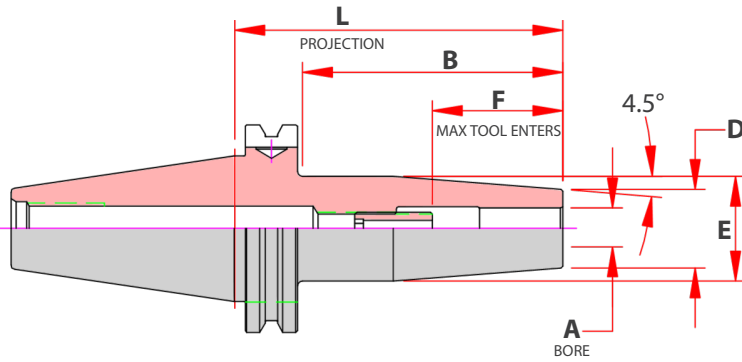
FOR ONLY:

\$6,700

HSK100A

FOR ONLY:

\$7,400



ez Shrink Pack promo qualified holders shown with **P**

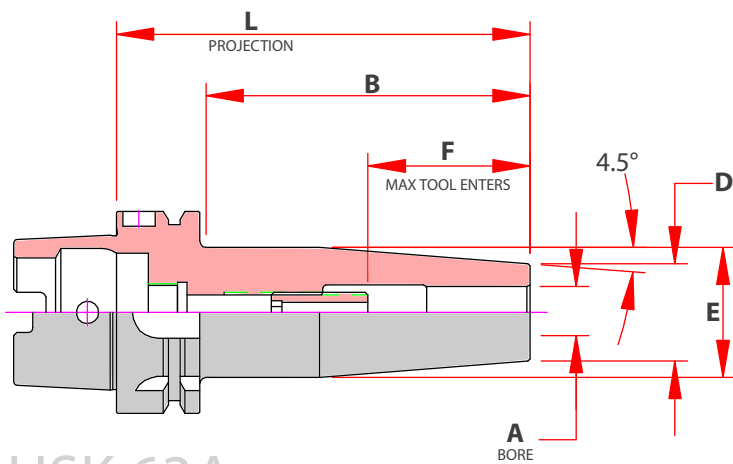
CAT40

	Part Number	A	B	D	E	F	L
P	CAT40-SD012-080	0.125	2.28	0.39	0.77	4.57	3.15
	CAT40-SD012-160	0.125	5.43	0.39	0.77	7.73	6.30
P	CAT40-SD018-080	0.188	2.28	0.39	0.77	4.57	3.15
	CAT40-SD018-160	0.188	5.43	0.39	0.77	7.73	6.30
P	CAT40-SD025-080	0.250	2.28	0.83	1.06	1.54	3.15
	CAT40-SD025-160	0.250	5.43	0.83	1.06	1.54	6.30
P	CAT40-SD031-080	0.313	2.28	0.83	1.06	1.54	3.15
	CAT40-SD031-160	0.313	5.43	0.83	1.06	1.54	6.30
P	CAT40-SD037-080	0.375	2.28	0.94	1.26	1.73	3.15
	CAT40-SD037-160	0.375	5.43	0.94	1.26	1.73	6.30
P	CAT40-SD043-080	0.438	2.28	0.94	1.26	1.73	3.15
	CAT40-SD043-160	0.438	5.43	0.94	1.26	1.73	6.30
P	CAT40-SD050-080	0.500	2.28	0.94	1.26	1.97	3.15
	CAT40-SD050-160	0.500	5.43	0.94	1.26	1.97	6.30
P	CAT40-SD062-080	0.625	2.28	1.06	1.34	2.09	3.15
	CAT40-SD062-160	0.625	5.43	1.06	1.34	2.09	6.30
P	CAT40-SD075-080	0.750	2.28	1.30	1.65	2.09	3.15
	CAT40-SD075-160	0.750	5.43	1.30	1.65	2.09	6.30
P	CAT40-SD100-100	1.000	3.07	1.73	2.09	2.28	3.94
	CAT40-SD100-160	1.000	5.43	1.73	2.09	2.28	6.30
P	CAT40-SD125-100	1.250	3.07	1.73	2.09	2.28	3.94
	CAT40-SD125-160	1.250	5.43	1.73	2.09	2.28	6.30

	Part Number	A	B	D	E	F	L
P	CAT40-SDM03-080	3mm	2.28	0.39	0.75	4.57	3.15
P	CAT40-SDM04-080	4mm	2.28	0.39	0.75	4.57	3.15
P	CAT40-SDM06-080	6mm	2.28	0.83	1.06	1.54	3.15
P	CAT40-SDM08-080	8mm	2.28	0.83	1.06	1.54	3.15
P	CAT40-SDM10-080	10mm	2.28	0.94	1.26	1.73	3.15
P	CAT40-SDM12-080	12mm	2.28	0.94	1.26	1.97	3.15
P	CAT40-SDM16-080	16mm	2.28	1.06	1.34	1.97	3.15
P	CAT40-SDM20-080	20mm	2.28	1.3	1.65	2.17	3.15
P	CAT40-SDM25-100	25mm	3.07	1.73	2.09	2.28	3.94
P	CAT40-SDM32-100	32mm	3.07	1.73	2.09	2.28	3.94

CAT50

	Part Number	A	B	D	E	F	L
P	CAT50-SD025-080	0.250	2.32	0.83	1.06	1.46	3.15
	CAT50-SD025-160	0.250	2.76	0.83	1.06	1.46	6.30
P	CAT50-SD031-080	0.313	2.32	0.83	1.06	1.46	3.15
	CAT50-SD031-160	0.313	2.76	0.83	1.06	1.46	6.30
P	CAT50-SD037-080	0.375	2.32	0.94	1.24	1.65	3.15
	CAT50-SD037-160	0.375	2.76	0.94	1.26	1.65	6.30
P	CAT50-SD050-080	0.500	2.32	0.94	1.24	1.65	3.15
	CAT50-SD050-160	0.500	2.76	0.94	1.26	1.65	6.30
P	CAT50-SD062-080	0.625	2.32	1.06	1.34	2.01	3.15
	CAT50-SD062-160	0.625	2.76	1.06	1.34	2.01	6.30
P	CAT50-SD075-080	0.750	2.32	1.30	1.61	2.09	3.15
	CAT50-SD075-160	0.750	3.35	1.30	1.61	2.09	6.30
P	CAT50-SD100-100	1.000	3.11	1.73	2.09	2.32	3.94
	CAT50-SD100-160	1.000	3.35	1.73	2.09	2.32	6.30
P	CAT50-SD125-100	1.250	3.11	1.73	2.09	2.48	3.94
	CAT50-SD125-160	1.250	3.35	1.73	2.09	2.48	6.30



HSK 63A

	Part Number	A	B	D	E	F	L
P	HSK 63A-SD012-080	0.125	2.02	0.39	0.71	2.28	3.15
	HSK 63A-SD012-160	0.125	5.16	0.39	0.75	5.43	6.30
P	HSK 63A-SD018-080	0.188	2.02	0.39	0.71	2.28	3.15
	HSK 63A-SD018-160	0.188	5.16	0.39	0.75	5.43	6.30
P	HSK 63A-SD025-080	0.250	2.02	0.83	1.06	1.54	3.15
	HSK 63A-SD025-160	0.250	5.16	0.83	1.06	1.54	6.30
P	HSK 63A-SD037-085	0.375	2.21	0.94	1.06	1.73	3.35
	HSK 63A-SD037-160	0.375	5.16	0.94	1.06	1.73	6.30
P	HSK 63A-SD050-090	0.500	2.41	0.94	1.26	1.97	3.54
	HSK 63A-SD050-160	0.500	5.16	0.94	1.26	1.97	6.30
P	HSK 63A-SD062-095	0.625	2.61	1.06	1.34	1.97	3.74
	HSK 63A-SD062-160	0.625	5.16	1.06	1.34	1.97	6.30
P	HSK 63A-SD075-100	0.750	2.80	1.30	1.65	2.05	3.94
	HSK 63A-SD075-160	0.750	5.16	1.30	1.65	2.05	6.30
P	HSK 63A-SD100-115	1.000	3.50	1.73	2.09	2.28	4.53
	HSK 63A-SD100-160	1.000	5.16	1.73	2.09	2.28	6.30
P	HSK 63A-SD125-120	1.250	3.70	1.73	2.09	2.40	4.72
	HSK 63A-SD125-160	1.250	5.16	1.73	2.09	2.40	6.30

	Part Number	A	B	D	E	F	L
P	HSK 63A-SDM03-080	3.00	2.02	0.39	0.71	2.28	3.15
	HSK 63A-SDM03-160	3.00	5.16	0.39	0.75	5.43	6.30
P	HSK 63A-SDM04-080	4.00	2.02	0.39	0.71	2.28	3.15
	HSK 63A-SDM04-160	4.00	5.16	0.39	0.75	5.43	6.30
P	HSK 63A-SDM06-080	6.00	2.02	0.83	1.06	1.54	3.15
	HSK 63A-SDM06-160	6.00	5.16	0.83	1.06	1.54	6.30
P	HSK 63A-SDM08-080	8.00	2.02	0.83	1.06	1.54	3.15
	HSK 63A-SDM08-160	8.00	5.16	0.83	1.06	1.54	6.30
P	HSK 63A-SDM10-085	10.00	2.21	0.94	1.26	1.73	3.35
	HSK 63A-SDM10-160	10.00	5.16	0.94	1.26	1.73	6.30
P	HSK 63A-SDM12-090	12.00	2.41	0.94	1.26	1.97	3.54
	HSK 63A-SDM12-160	12.00	5.16	0.94	1.26	1.97	6.30
P	HSK 63A-SDM16-095	16.00	2.61	1.06	1.34	1.97	3.74
	HSK 63A-SDM16-160	16.00	5.16	1.06	1.34	1.97	6.30
P	HSK 63A-SDM20-100	20.00	2.80	1.30	1.65	2.17	3.94
	HSK 63A-SDM20-160	20.00	5.16	1.30	1.65	2.17	6.30
P	HSK 63A-SDM25-115	25.00	3.50	1.73	2.09	2.40	4.53
	HSK 63A-SDM25-160	25.00	5.16	1.73	2.09	2.40	6.30

0.0001" TIR
Guaranteed

Manufactured
from H13 steel

Powerful
Milling/Drilling

Balanced for
G2.5@25,000RPM

Coolant Thru
Center

ez Shrink Pack promo qualified holders shown with **P**

HSK 100A

	Part Number	A	B	D	E	F	L
P	HSK100A-SD025-085	0.250	1.91	0.83	1.06	1.46	3.35
	HSK100A-SD025-160	0.250	2.40	0.83	1.06	1.46	6.30
P	HSK100A-SD031-085	0.313	1.91	0.83	1.06	1.46	3.35
	HSK100A-SD031-160	0.313	2.40	0.83	1.06	1.46	6.30
P	HSK100A-SD037-090	0.375	2.20	0.94	1.24	1.65	3.54
	HSK100A-SD037-160	0.375	2.40	0.94	1.26	1.65	6.30
P	HSK100A-SD050-095	0.500	2.40	0.94	1.26	1.89	3.74
	HSK100A-SD050-160	0.500	2.40	0.94	1.26	1.89	6.30
P	HSK100A-SD062-100	0.625	2.60	1.06	1.34	2.01	3.94
	HSK100A-SD062-160	0.625	2.40	1.06	1.34	2.01	6.30
P	HSK100A-SD075-105	0.750	2.80	1.30	1.61	2.09	4.13
	HSK100A-SD075-160	0.750	2.99	1.30	1.61	2.09	6.30
P	HSK100A-SD100-115	1.000	3.19	1.73	2.09	2.32	4.53
	HSK100A-SD100-160	1.000	4.57	1.73	2.09	2.32	6.30
P	HSK100A-SD125-120	1.250	3.39	1.73	2.09	2.48	4.72
	HSK100A-SD125-160	1.250	4.57	1.73	2.09	2.48	6.30



3 μm - 0.0001" Runout



Designed for Cutting Tools with h6 shank tolerance



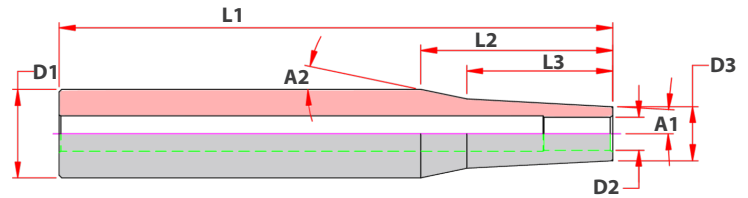
Designed to work in standard Milling Chucks



Close Center to clear fixtures or part walls

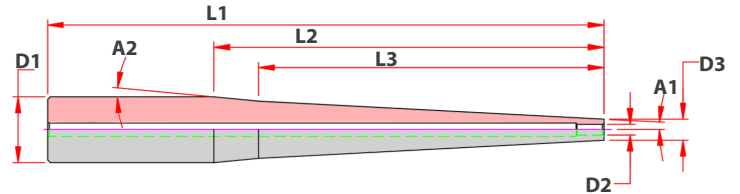
SD Shrink Fit Extensions - Inch

Part Number	D1	D2	D3	L1	L2	L3	A1	A2
S100-SD025-0800	1	0.250	0.49	8	2.17	1.65	3.0	17.9
S100-SD031-0800	1	0.313	0.55	8	2.17	1.65	3.0	14.9
S100-SD037-0800	1	0.375	0.61	8	2.17	1.65	3.0	11.8
S100-SD050-0800	1	0.500	0.81	8	1.71	1.43	2.5	6.5



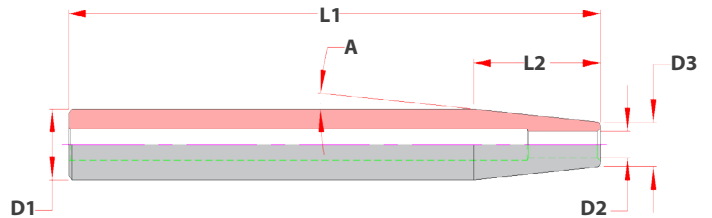
SN Shrink Fit Slim Nose Extensions - Inch

Part	D1	D2	D3	L1	L2	L3	A1	A2
S037-SN012-0315	0.375	0.125	0.240	3.15	1.40	-	2.800	-
S037-SN018-0315	0.375	0.188	0.310	3.15	1.40	-	1.500	-
S050-SN025-0315	0.500	0.250	0.370	3.15	1.40	-	2.800	-
S075-SN012-0800	0.750	0.125	0.240	8.00	4.46	3.950	3.000	5.4
S075-SN018-0800	0.750	0.188	0.310	8.00	4.46	-	2.900	-
S075-SN025-0800	0.750	0.250	0.370	8.00	4.46	-	2.500	-
S100-SN037-0800	1.000	0.375	0.490	8.00	4.33	3.820	3.000	6.0
S100-SN050-0800	1.000	0.500	0.620	8.00	4.33	3.820	2.000	6.0



SD Shrink Fit Nose Extensions - Metric

Part Number	D1	D2	D3	L1	L2	A
S12-SD03-160	12 mm	3 mm	8 mm	160 mm	25.41 mm	4.5
S12-SD04-160	12 mm	4 mm	8 mm	160 mm	25.41 mm	4.5
S16-SD03-160	16 mm	3 mm	10 mm	160 mm	38.12 mm	4.5
S16-SD04-160	16 mm	4 mm	10 mm	160 mm	38.12 mm	4.5
S16-SD05-160	16 mm	5 mm	10 mm	160 mm	38.12 mm	4.5
S16-SD06-160	16 mm	6 mm	10 mm	160 mm	38.12 mm	4.5
S20-SD06-160	20 mm	6 mm	14 mm	160 mm	38.12 mm	4.5
S20-SD06-300	20 mm	6 mm	14 mm	300 mm	38.12 mm	4.5
S20-SD08-160	20 mm	8 mm	14 mm	160 mm	38.12 mm	4.5
S20-SD08-300	20 mm	8 mm	14 mm	300 mm	38.12 mm	4.5
S25-SD10-160	25 mm	10 mm	20 mm	160 mm	31.77 mm	4.5
S25-SD10-300	25 mm	10 mm	20 mm	300 mm	31.77 mm	4.5
S25-SD12-160	25 mm	12 mm	20 mm	160 mm	31.77 mm	4.5
S25-SD12-300	25 mm	12 mm	20 mm	300 mm	31.77 mm	4.5
S25-SD14-160	25 mm	14 mm	20 mm	160 mm	31.77 mm	4.5
S25-SD16-160	25 mm	16 mm	22 mm	160 mm	19.06 mm	4.5
S25-SD16-300	25 mm	16 mm	22 mm	300 mm	19.06 mm	4.5



Shrink Fit System



Complete Shrink Fit Solution to your applications



ez Shrink System

PIONEER N.A., INC.

Premium Tool & Work Holding
641 Fargo Ave. Elk Grove Village, IL 60007
847-593-6000 | www.PioneerNA.com
Customer Service: sales@PioneerNA.com

