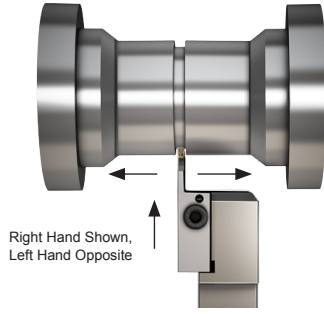
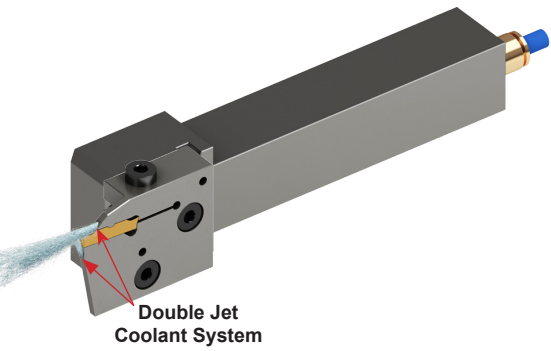


Kool Cut™ Modular Turning & Grooving System *Right Hand*



Grade DUP35UG

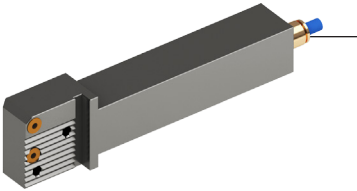
P	Carbon & Alloy Steel	●
M	Stainless Steel	●
K	Cast Iron	○
N	Non Ferrous Materials	○
S	Super Alloys	○

For Universal Turning & Grooving Applications

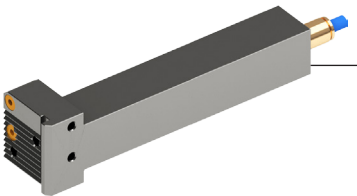
BUY
1 Toolholder and 1 Cartridge
and GET
10 FREE INSERTS!

Right Hand Straight Toolholder

Description	UPC #	Shank Size	Price
ADDN-MTR-12-C	61987-Z20A6	0.750"	\$110.88
ADDN-MTR-16-D	61988-Z20A6	1.000"	\$122.43
ADDN-MTR-20-E	61989-Z20A6	1.250"	\$133.98

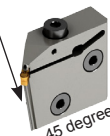
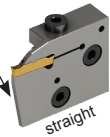
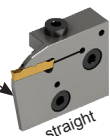
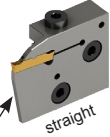
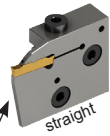


Each toolholder will hold any cartridge on this page



Right Hand Gang 90° Toolholder

Description	UPC #	Shank Size	Price
ADDN-MGR-12-C	61996-Z20A6	0.750"	\$110.88
ADDN-MGR-16-D	61997-Z20A6	1.000"	\$122.43
ADDN-MGR-20-E	61998-Z20A6	1.250"	\$133.98



Cartridges

Description	UPC #	Max. Depth of Cut	Price
ADKDN-TR20-06	61750-Z20A6	0.236"	\$138.60
ADKDN-TR20-12	61751-Z20A6	0.472"	\$150.15
ADKDN-TR20-18	61752-Z20A6	0.709"	\$161.70

ADKDN-TR30-09	61753-Z20A6	0.354"	\$138.60
ADKDN-TR30-18	61754-Z20A6	0.709"	\$150.15
ADKDN-TR30-27	61755-Z20A6	1.063"	\$161.70

ADKDN-TR40-12	61756-Z20A6	0.472"	\$143.22
ADKDN-TR40-18	61757-Z20A6	0.709"	\$152.46
ADKDN-TR40-24	61758-Z20A6	0.945"	\$161.70
ADKDN-TR40-30	61759-Z20A6	1.181"	\$170.94

ADKDN-TR50-10	61760-Z20A6	0.394"	\$147.84
ADKDN-TR50-15	61761-Z20A6	0.591"	\$157.08
ADKDN-TR50-25	61762-Z20A6	0.984"	\$166.32
ADKDN-TR50-40	61763-Z20A6	1.575"	\$175.56

ADKDN-TR60-12	61764-Z20A6	0.472"	\$152.46
ADKDN-TR60-18	61765-Z20A6	0.709"	\$166.32
ADKDN-TR60-30	61766-Z20A6	1.181"	\$175.56
ADKDN-TR60-48	61767-Z20A6	1.890"	\$184.80

ADKDN-UR30-06	61911-Z20A6	0.236"	\$138.60
ADKDN-UR40-08	61912-Z20A6	0.315"	\$138.60
ADKDN-UR50-10	61913-Z20A6	0.394"	\$138.60

10 FREE Inserts

Description	UPC #	Price Each	10
0.079"			
DNTQ-22-2002-3EU-N	82440	\$16.77	\$167.70

.118"			
DNTQ-22-3003-3EU-N	82442	\$18.92	\$189.20

.157"			
DNTQ-25-4004-3EU-N	82443	\$19.96	\$199.60

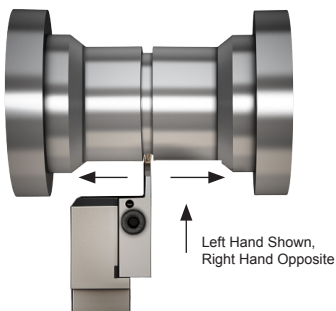
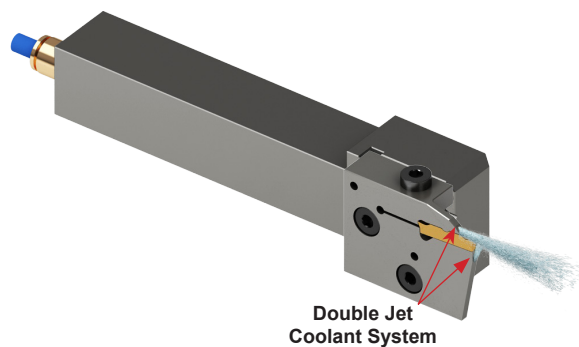
.197"			
DNTQ-25-5004-3EU-N	82444	\$20.72	\$207.20

.236"			
DNTQ-25-6004-3EU-N	82445	\$22.94	\$229.40

.118" .157" .197"			
DNTR-22-3015-3EU-N	82459	\$18.92	\$189.20
DNTR-25-4020-3EU-N	82460	\$19.96	\$199.60
DNTR-25-5025-3EU-N	82461	\$20.72	\$207.20

Kool Cut™ Modular Turning & Grooving System *Left Hand*

Grade DUP35UG



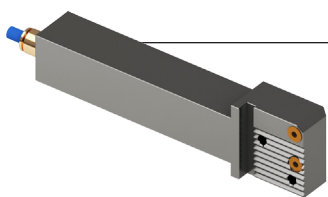
P	Carbon & Alloy Steel	●
M	Stainless Steel	●
K	Cast Iron	○
N	Non Ferrous Materials	○
S	Super Alloys	○

For Universal Turning & Grooving Applications

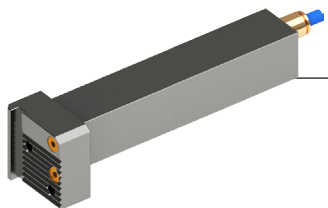
BUY
1 Toolholder and 1 Cartridge
and GET
10 FREE INSERTS!

Left Hand Straight Toolholder

Description	UPC #	Shank Size	Price
ADDN-MTL-12-C	61990-Z20A6	0.750"	\$110.88
ADDN-MTL-16-D	61991-Z20A6	1.000"	\$122.43
ADDN-MTL-20-E	61992-Z20A6	1.250"	\$133.98



Each toolholder will hold any cartridge on this page



Left Hand Gang 90° Toolholder

Description	UPC #	Shank Size	Price
ADDN-MGL-12-C	61993-Z20A6	0.750"	\$110.88
ADDN-MGL-16-D	61994-Z20A6	1.000"	\$122.43
ADDN-MGL-20-E	61995-Z20A6	1.250"	\$133.98

Cartridges

Description	UPC #	Max. Depth of Cut	Price
ADKDN-TL20-06	61768-Z20A6	0.236"	\$138.60
ADKDN-TL20-12	61769-Z20A6	0.472"	\$150.15
ADKDN-TL20-18	61770-Z20A6	0.709"	\$161.70

ADKDN-TL30-09	61771-Z20A6	0.354"	\$138.60
ADKDN-TL30-18	61772-Z20A6	0.709"	\$150.15
ADKDN-TL30-27	61773-Z20A6	1.063"	\$161.70

ADKDN-TL40-12	61774-Z20A6	0.472"	\$143.22
ADKDN-TL40-18	61775-Z20A6	0.709"	\$152.46
ADKDN-TL40-24	61776-Z20A6	0.945"	\$161.70
ADKDN-TL40-30	61777-Z20A6	1.181"	\$170.94

ADKDN-TL50-10	61778-Z20A6	0.394"	\$147.84
ADKDN-TL50-15	61779-Z20A6	0.591"	\$157.08
ADKDN-TL50-25	61780-Z20A6	0.984"	\$166.32
ADKDN-TL50-40	61781-Z20A6	1.575"	\$175.56

ADKDN-TL60-12	61782-Z20A6	0.472"	\$152.46
ADKDN-TL60-18	61783-Z20A6	0.709"	\$166.32
ADKDN-TL60-30	61784-Z20A6	1.181"	\$175.56
ADKDN-TL60-48	61785-Z20A6	1.890"	\$184.80

ADKDN-UL30-06	61916-Z20A6	0.236"	\$138.60
ADKDN-UL40-08	61917-Z20A6	0.315"	\$138.60
ADKDN-UL50-10	61918-Z20A6	0.394"	\$138.60

10 FREE Inserts

Description	UPC #	Price Each	10
0.079"			
DNTQ-22-2002-3EU-N	82440	\$16.77	\$167.70

.118"			
DNTQ-22-3003-3EU-N	82442	\$18.92	\$189.20

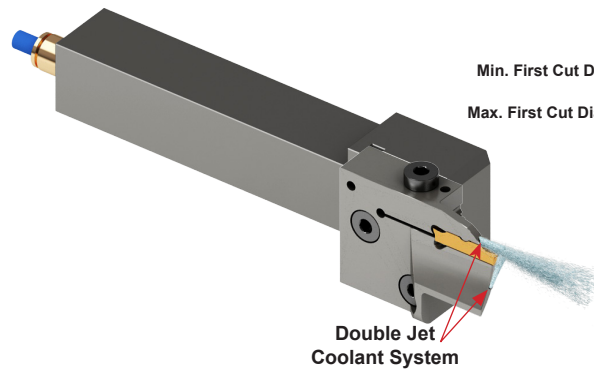
.157"			
DNTQ-25-4004-3EU-N	82443	\$19.96	\$199.60

.197"			
DNTQ-25-5004-3EU-N	82444	\$20.72	\$207.20

.236"			
DNTQ-25-6004-3EU-N	82445	\$22.94	\$229.40

.118" .157" .197"			
DNTR-22-3015-3EU-N	82459	\$18.92	\$189.20
DNTR-25-4020-3EU-N	82460	\$19.96	\$199.60
DNTR-25-5025-3EU-N	82461	\$20.72	\$207.20

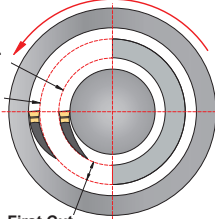
Kool Cut™ Modular Face Grooving System *Left Hand*



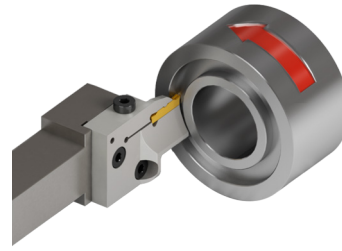
Counter Clockwise Rotation

Min. First Cut Dia.

Max. First Cut Dia.



First Cut Dia. Range



Grade DUP35UG

P	Carbon & Alloy Steel	●
M	Stainless Steel	●
K	Cast Iron	○
N	Non Ferrous Materials	○
S	Super Alloys	○

For Universal Turning & Grooving Applications

BUY

1 Toolholder and 1 Cartridge

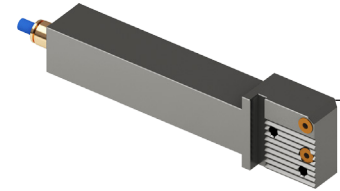
and GET

10 FREE INSERTS!

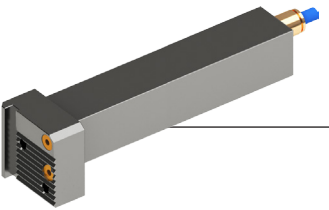
Left Hand Straight Toolholder

Description	UPC #	Shank Size	Price
-------------	-------	------------	-------

ADDN-MTL-12-C	61990-Z20A6	0.750"	\$110.88
ADDN-MTL-16-D	61991-Z20A6	1.000"	\$122.43
ADDN-MTL-20-E	61992-Z20A6	1.250"	\$133.98



Each toolholder will hold any cartridge on this page



Left Hand Gang 90° Toolholder

Description	UPC #	Shank Size	Price
-------------	-------	------------	-------

ADDN-MGL-12-C	61993-Z20A6	0.750"	\$110.88
ADDN-MGL-16-D	61994-Z20A6	1.000"	\$122.43
ADDN-MGL-20-E	61995-Z20A6	1.250"	\$133.98

Cartridges

Description	UPC #	Max. Depth of Cut	First Cut Dia.		Price
			Min.	Max.	
ADCDN-FL30-022030-12	62208-Z20A6	0.472"	0.866"	1.181"	\$150.15
ADCDN-FL30-030038-12	62209-Z20A6	0.472"	1.181"	1.496"	\$150.15
ADCDN-FL30-038048-12	62210-Z20A6	0.472"	1.496"	1.890"	\$150.15
ADCDN-FL30-048060-12	62211-Z20A6	0.472"	1.890"	2.362"	\$150.15
ADCDN-FL30-060075-12	62212-Z20A6	0.472"	2.362"	2.953"	\$150.15
ADCDN-FL30-075100-12	62213-Z20A6	0.472"	2.953"	3.937"	\$150.15
ADCDN-FL30-100200-12	62214-Z20A6	0.472"	3.937"	7.874"	\$150.15
ADCDN-FL30-200300-12	62215-Z20A6	0.472"	7.874"	11.811"	\$150.15
ADCDN-FL30-300->12	62216-Z20A6	0.472"	11.811"	>	\$150.15

ADCDN-FL30-060075-18	62217-Z20A6	0.709"	2.362"	2.953"	\$161.70
ADCDN-FL30-075100-18	62218-Z20A6	0.709"	2.953"	3.937"	\$161.70
ADCDN-FL30-100200-18	62219-Z20A6	0.709"	3.937"	7.874"	\$161.70
ADCDN-FL30-200300-18	62220-Z20A6	0.709"	7.874"	11.811"	\$161.70
ADCDN-FL30-300->18	62221-Z20A6	0.709"	11.811"	>	\$161.70

ADCDN-FL30-100200-24	62222-Z20A6	0.945"	7.874"	0.945"	\$173.25
ADCDN-FL30-200300-24	62223-Z20A6	0.945"	11.811"	0.945"	\$173.25
ADCDN-FL30-300->24	62224-Z20A6	0.945"	>	0.945"	\$173.25

ADCDN-FL60-050075-13	62253-Z20A6	0.512"	1.969"	2.953"	\$166.32
ADCDN-FL60-075130-13	62254-Z20A6	0.512"	2.953"	5.118"	\$166.32
ADCDN-FL60-130300-13	62255-Z20A6	0.512"	5.118"	11.811"	\$166.32
ADCDN-FL60-300500-13	62256-Z20A6	0.512"	11.811"	19.685"	\$166.32
ADCDN-FL60-500->13	62257-Z20A6	0.512"	19.685"	>	\$166.32

ADCDN-FL60-075130-26	62258-Z20A6	1.024"	2.953"	5.118"	\$175.56
ADCDN-FL60-130300-26	62259-Z20A6	1.024"	5.118"	11.811"	\$175.56
ADCDN-FL60-300500-26	62260-Z20A6	1.024"	11.811"	19.685"	\$175.56
ADCDN-FL60-500->26	62261-Z20A6	1.024"	19.685"	>	\$175.56

ADCDN-FL60-075130-39	62262-Z20A6	1.535"	2.953"	5.118"	\$184.80
ADCDN-FL60-130300-39	62263-Z20A6	1.535"	5.118"	11.811"	\$184.80
ADCDN-FL60-300500-39	62264-Z20A6	1.535"	11.811"	19.685"	\$184.80
ADCDN-FL60-500->39	62265-Z20A6	1.535"	19.685"	>	\$184.80

10 FREE Inserts

Description	UPC #	Price	
		Each	10
.118"			
DNTQ-22-3003-3EU-N	82442	\$18.92	\$189.20

.118"			
DNTQ-22-3003-3EU-N	82442	\$18.92	\$189.20

.118"			
DNTQ-22-3003-3EU-N	82442	\$18.92	\$189.20

.236"			
DNTQ-25-6004-3EU-N	82445	\$22.94	\$229.40

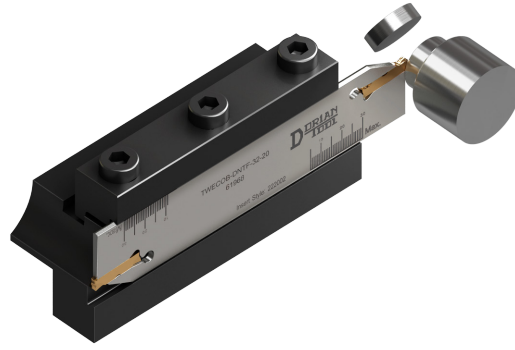
.236"			
DNTQ-25-6004-3EU-N	82445	\$22.94	\$229.40

.236"			
DNTQ-25-6004-3EU-N	82445	\$22.94	\$229.40

Kool Cut™ Twin Edge Parting-Off Insert Blades *Neutral*

- Double Cutting Edge
- High Rigidity
- Better Finish
- Straight Cut

BUY 1 Blade
and GET
5 FREE INSERTS!



Grade DUP35UG

P	Carbon & Alloy Steel	●
M	Stainless Steel	●
K	Cast Iron	○
N	Non Ferrous Materials	○
S	Super Alloys	○

For Universal Turning & Grooving Applications

Blade

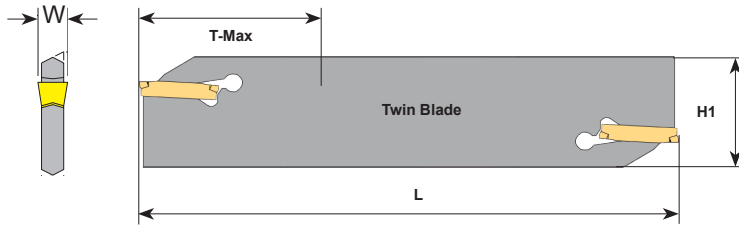
5 FREE Inserts

1 FREE Insert Key

Description	UPC #	Max.Depth of Cut	H1	L	Insert Size W	Price
TWECOB-DNTF-26-20	61965-Z20A6	1.000"			0.079"	\$105.22
TWECOB-DNTF-26-30	61966-Z20A6	1.550"	1.023"	4.43"	0.118"	\$107.61
TWECOB-DNTF-26-40	61967-Z20A6	1.650"			0.157"	\$110.00
TWECOB-DNTF-32-20	61968-Z20A6	1.150"			0.079"	\$119.57
TWECOB-DNTF-32-30	61969-Z20A6	1.750"			0.118"	\$124.35
TWECOB-DNTF-32-40	61970-Z20A6	1.950"	1.259"	5.509"	0.157"	\$126.74
TWECOB-DNTF-32-50	61971-Z20A6	2.350"			0.197"	\$129.13
TWECOB-DNTF-32-60	61972-Z20A6	2.750"			0.236"	\$133.91

Description	UPC #	Price Each	5
DNTQ-22-2002-3EU-N	82440	\$16.77	\$83.85
DNTQ-22-3003-3EU-N	82442	\$18.92	\$94.60
DNTQ-25-4004-3EU-N	82443	\$19.96	\$99.80
DNTQ-22-2002-3EU-N	82440	\$16.77	\$83.85
DNTQ-22-3003-3EU-N	82442	\$18.92	\$94.60
DNTQ-25-4004-3EU-N	82443	\$19.96	\$99.80
DNTQ-25-5004-3EU-N	82444	\$20.72	\$103.60
DNTQ-25-6004-3EU-N	82445	\$22.94	\$114.70

Description	UPC #	Price
KCIK-DN	61204	\$20
KCIK-DN	61204	\$20

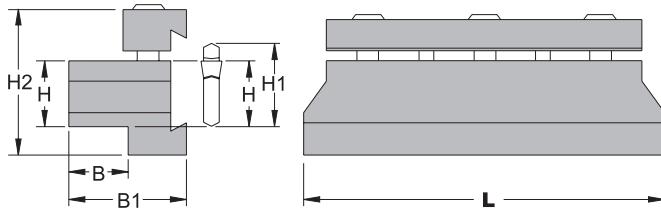


5 Free Inserts!



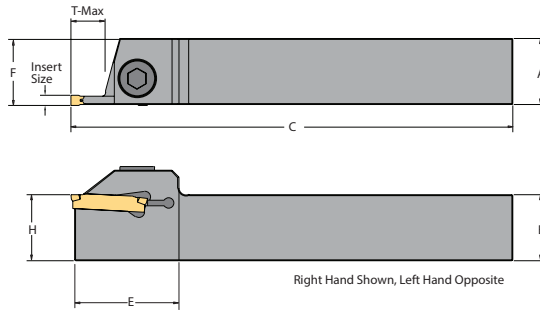
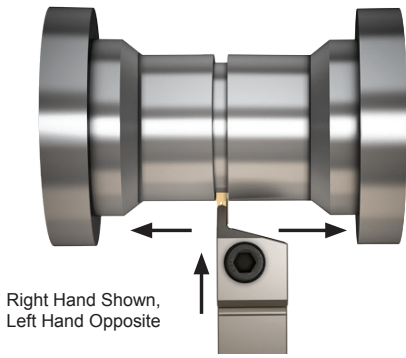
1 Free Key!

SGTBN Neutral Hand Cut-Off Toolholders



Description	UPC # Neutral	H	H1	H2	B	B1	L	Blade Used	Screw used	Price
SGTBN19-5	62973	0.750"	1.020"	2.000"	0.750"	1.375"	3.50"	TWECOB-DNTF-26-20 Thru TWECOB-DNTF-26-40	ASHCSFP-060-100-030-MA	\$ 191.58
SGTBN19-6	62974	0.750"	1.250"	2.000"	0.750"	1.375"	4.50"	TWECOB-DNTF-32-20 Thru TWECOB-DNTF-32-60	ASHCSFP-060-100-030-MA	\$ 191.58
SGTBN25,4-6	62975	1.000"	1.250"	2.125"	0.875"	1.500"	4.50"			\$ 197.39
SGTBN31,8-6	62976	1.250"	1.250"	2.375"	1.125"	1.750"	4.50"			\$ 202.74
SGTBN38,1-6	62977	1.500"	1.250"	2.875"	1.625"	2.250"	4.50"			\$ 271.95

Turning & Grooving Right Hand & Left Hand Toolholder



Grade DUP35UG

P	Carbon & Alloy Steel	●
M	Stainless Steel	●
K	Cast Iron	○
N	Non Ferrous Materials	○
S	Super Alloys	○



For Universal Turning & Grooving Applications

**BUY 1 Toolholder
and GET
5 FREE INSERTS!**

Right Hand Toolholder

Description	UPC #	Price	A	B	C	H	F	Max. Depth of Cut
DETGFR12-030C-S09	63606-Z20A6	\$92.57						0.354"
DETGFR12-030C-M14	63636-Z20A6	\$98.01	0.750"	0.750"	5.00"	0.750"	0.762"	0.551"
DETGFR12-030C-L20	63666-Z20A6	\$103.46						0.787"
DETGFR16-030D-S09	63614-Z20A6	\$103.46						0.354"
DETGFR16-030D-M14	63644-Z20A6	\$108.90	1.000"	1.000"	6.00"	1.000"	1.012"	0.551"
DETGFR85-030D-S09	63622-Z20A6	\$114.35						0.354"
DETGFR85-030D-M14	63652-Z20A6	\$119.79	1.000"	1.250"	7.00"	1.250"	1.012"	0.551"
DETGFR85-030D-L20	63682-Z20A6	\$125.24						0.787"
DETGFR12-040C-S12	63608-Z20A6	\$92.57						0.472"
DETGFR12-040C-M18	63638-Z20A6	\$98.01	0.750"	0.750"	5.00"	0.750"	0.762"	0.709"
DETGFR12-040C-L24	63668-Z20A6	\$103.46						0.945"
DETGFR16-040D-S12	63616-Z20A6	\$103.46						0.472"
DETGFR16-040D-M18	63646-Z20A6	\$108.90	1.000"	1.000"	6.00"	1.000"	1.012"	0.709"
DETGFR16-040D-L24	63676-Z20A6	\$114.35						0.945"
DETGFR85-040D-S12	63624-Z20A6	\$114.35						0.472"
DETGFR85-040D-M18	63654-Z20A6	\$119.79	1.000"	1.250"	7.00"	1.250"	1.012"	0.709"
DETGFR85-040D-L24	63684-Z20A6	\$125.24						0.945"



5 FREE Inserts

Description	UPC #	Size	Price Each	5	
	DNTQ-22-3003-3EU-N	82442	.118"	\$18.92	\$94.60
	DNTQ-25-4004-3EU-N	82443	.157"	\$19.96	\$99.80


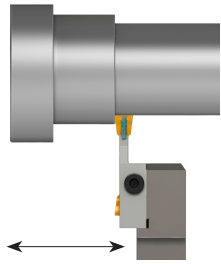
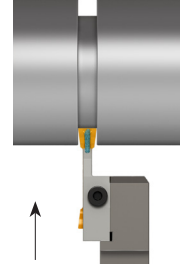
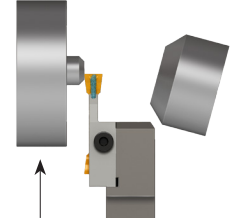

Left Hand Toolholder


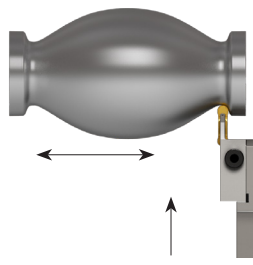
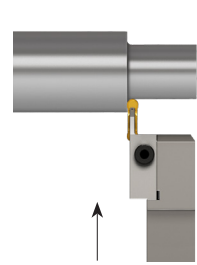
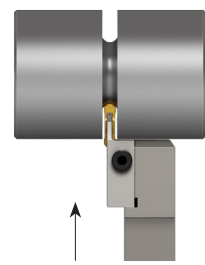

Description	UPC #	Price	A	B	C	H	F	Max. Depth of Cut
DETGFL12-030C-S09	63607-Z20A6	\$92.57	0.750"	0.750"	5.00"	0.750"	0.762"	0.354"
DETGFL12-030C-M14	63637-Z20A6	\$98.01						0.551"
DETGFL16-030D-S09	63615-Z20A6	\$103.46						0.354"
DETGFL16-030D-M14	63645-Z20A6	\$108.90	1.000"	1.000"	6.00"	1.000"	1.012"	0.551"
DETGFL85-030D-S09	63623-Z20A6	\$114.35						0.354"
DETGFL85-030D-M14	63653-Z20A6	\$119.79	1.000"	1.250"	7.00"	1.250"	1.012"	0.551"
DETGFL85-030D-L20	63683-Z20A6	\$125.24						0.787"
DETGFL12-040C-S12	63609-Z20A6	\$92.57						0.472"
DETGFL12-040C-M18	63639-Z20A6	\$98.01	0.750"	0.750"	5.00"	0.750"	0.762"	0.709"
DETGFL12-040C-L24	63669-Z20A6	\$103.46						0.945"
DETGFL16-040D-S12	63617-Z20A6	\$103.46						0.472"
DETGFL16-040D-M18	63647-Z20A6	\$108.90	1.000"	1.000"	6.00"	1.000"	1.012"	0.709"
DETGFL16-040D-L24	63677-Z20A6	\$114.35						0.945"
DETGFL85-040D-S12	63625-Z20A6	\$114.35						0.472"
DETGFL85-040D-M18	63655-Z20A6	\$119.79	1.000"	1.250"	7.00"	1.250"	1.012"	0.709"
DETGFL85-040D-L24	63685-Z20A6	\$125.24						0.945"

5 FREE Inserts

Description	UPC #	Size	Price Each	5	
	DNTQ-22-3003-3EU-N	82442	.118"	\$18.92	\$94.60
	DNTQ-25-4004-3EU-N	82443	.157"	\$19.96	\$99.80

Technical Information

Insert Specification				Insert Application		
Double-End Cutting Edge DNTQ-N-_____DUP35UG Neutral Straight Nose Multi-Cutting Direction Right Hand and Left Hand						
Turning				Grooving		Parting-Off
						
Cutting Data				Insert Geometry, Material Application		
Insert Dimension		Maximum a_p Depth of Cut for Turning		Maximum f_n Feed Rate for Turning, Grooving and Parting-off		
Width	Length	Radius	inch	in/rev.	mm/rev	
.079"	.866"	.05mm	0.039"	0.006	0.15	
.118"	.866"	.07mm	0.059"	0.008	0.20	
.157"	.984"	.1mm	0.079"	0.009	0.23	
.197"	.984"	.1mm	0.098"	0.010	0.25	
.236"	.984"	.1mm	0.118"	0.012	0.30	
						
				● First Choice Grade ○ Second Best		

Insert Specification				Insert Application		
Double-End Cutting Edge DNTR-N-_____DUP35UG Neutral Round Nose Multi-Cutting Direction Right Hand and Left Hand						
Profiling				Turning		Grooving
						
Cutting Data				Insert Geometry, Material Application		
Insert Dimension		Maximum a_p Depth of Cut for Turning		Maximum f_n Feed Rate for Turning, Grooving and Parting-off		
Width	Length	Radius	inch	in/rev.	mm/rev	
.118"	.866"	1.5mm	0.059"	0.012	0.30	
.157"	.984"	2.0mm	0.079"	0.014	0.35	
.197"	.984"	3.0mm	0.098"	0.016	0.40	
						
				● First Choice Grade ○ Second Best		

"T" Square Nose

DUP35UG Insert Grade

Material Application

P30	M25	K30	N30	S30
●	●	○	○	○

Wear Resistant Toughness

01 10 20 30 40 50

Grade Specification

- Grain Size .7-1 μ m
- Coating, PVD TiAlN 4 μ m
- High Wear Resistant
- Impact Resistant
- Universal Application at Medium Vc

Insert Cutting Geometry Specification

- Good Chip Control
- Honed Cutting Edge
- Universal Application
- Turning, Grooving, Parting-Off
- For all Material types

UPC #	Application	Part Number	Price	Insert Size		DUP35UG
				Width	Length	
82440	Neutral Turning Grooving Parting-Off	DNTQ-22 2002-3EU-N DUP35UG	\$16.77	.079"	.866"	●
82442		DNTQ-22 3003-3EU-N DUP35UG	\$18.92	.118"	.866"	●
82443		DNTQ-25 4004-3EU-N DUP35UG	\$19.96	.157"	.984"	●
82444		DNTQ-25 5004-3EU-N DUP35UG	\$20.72	.197"	.984"	●
82445		DNTQ-25 6004-3EU-N DUP35UG	\$22.94	.236"	.984"	●

"R" Round Nose

UPC #	Application	Part Number	List	Insert Size		DUP35UG
				Width	Length	
82459	Turning Grooving Profiling	DNTR-22 3015-3EU-N DUP35UG	\$18.92	.118"	.866"	●
82460		DNTR-25 4020-3EU-N DUP35UG	\$19.96	.157"	.984"	●
82461		DNTR-25 5025-3EU-N DUP35UG	\$20.72	.197"	.984"	●

Chip Control - Surface Finish - Tool Life

The **Double Jet Coolant System** is Designed with the coolant exiting from 2 outlets, above and below the insert cutting edge.

Above the insert cutting edge, the coolant is aimed precisely between the cutting edge of the insert and the chip.

Below the insert cutting edge, the coolant is aimed under the insert cutting edge and the workpiece surface.

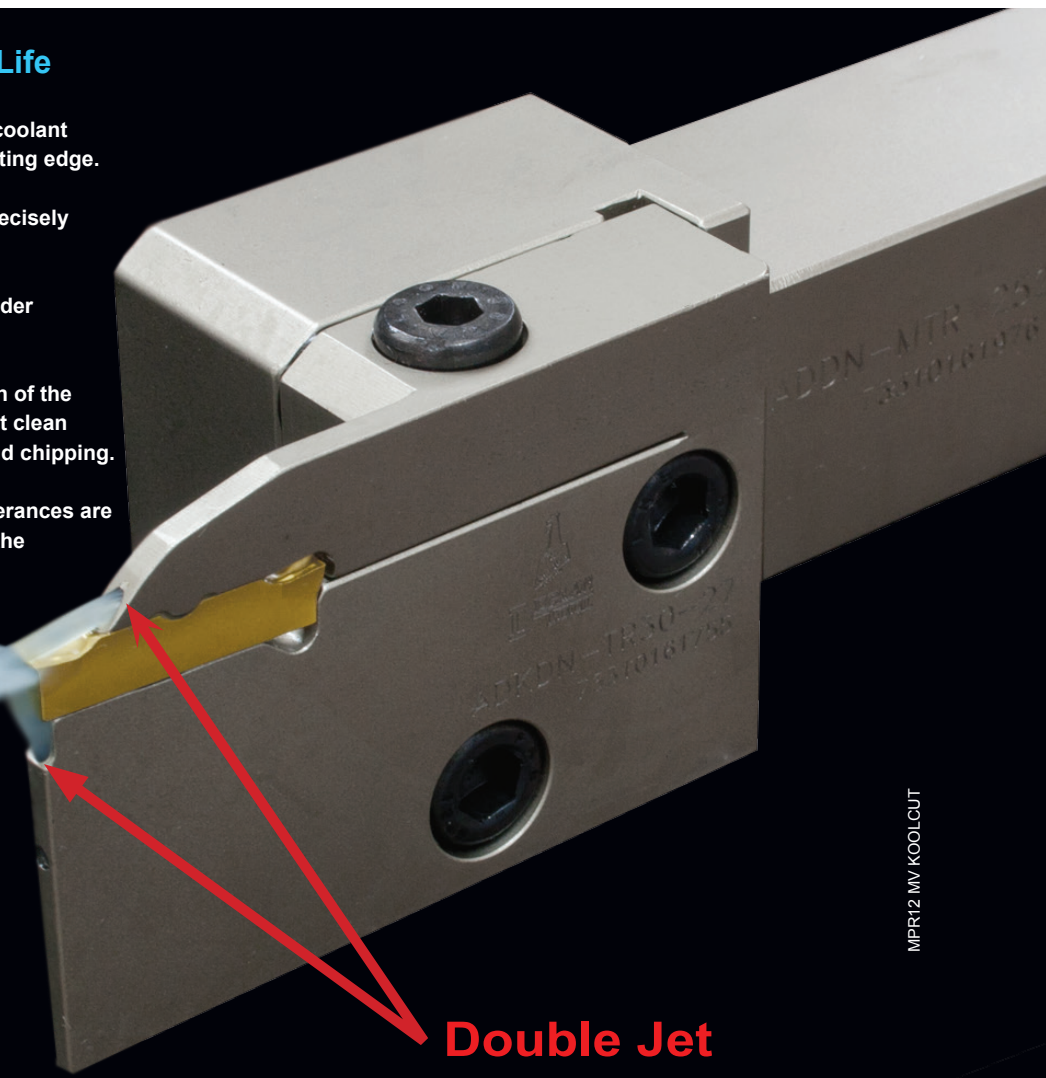
With the combination of the 2 Coolant Jets, the friction of the cutting edge is reduced, the insert cutting edge is kept clean and at a constant temperature, reducing edge wear and chipping.

Consequently, the surface finish, work quality and tolerances are improved and insert life is extended up to 100% over the conventional coolant system.



Watch KOOL Cut Video

Download this flier in PDF



**Double Jet
Coolant System**

MPR12 MV KOOLCUT