

45° Lead Angle & 8 Ground Edges

K-Tool Octa-Mill

☺ **GROUND EDGES** are sharper & FREE CUTTING ☺

☺ **GROUND INSERTS** run true and index closer ☺

Slot • Ramp • Plunge • Chamfer • Face Mill



List Price

OC-2000	\$252.00
OC-2500	\$315.00
OC-3000	\$368.00
OC-4000	\$380.00
OC-5000	\$480.00
OC-6000	\$580.00
ODEB 535 X20	\$13.70

Ohio Headquarters

(800)445-1068

www.hemlytool.com

Email: sales@hemlytool.com

Hemly

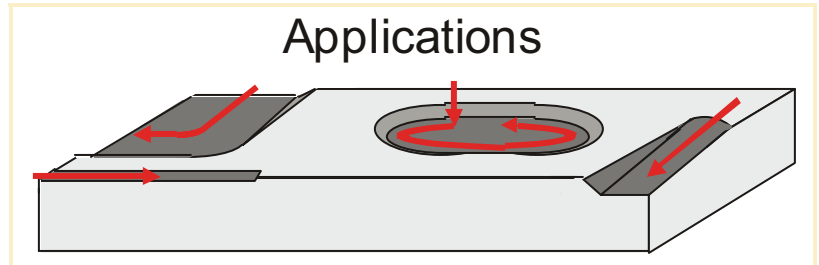
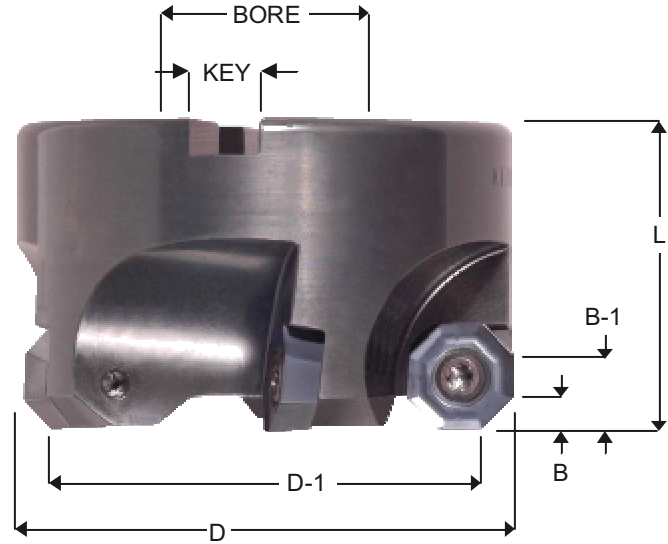
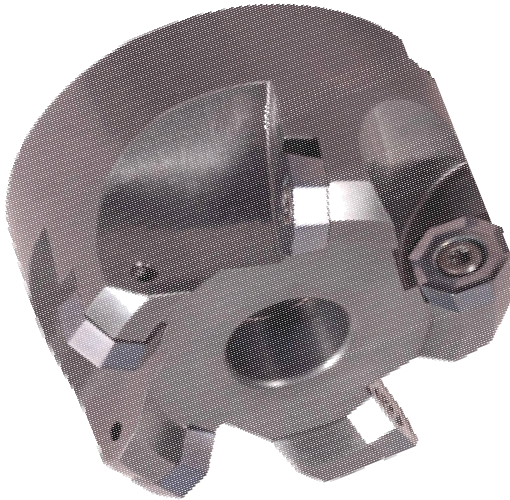
TOOL SUPPLY, INC.

OCTA-SHELL MILLS

2.000 - 6.000
Diameter

Plunge - Ramp - Face Mill - Slot - Chamfer

8 Edges Per Insert

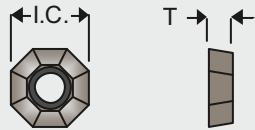


Shell Mills

Tool #	D	D-1	B	B-1	L	Flutes	Bore	Key	Ramp	Inserts
OC-2000	2.000	1.625	.160	.410	1.750	3	.750	.312	10 DEG.	OPEB-535 RPEB-535
OC-2500	2.500	2.125	.160	.410	1.750	4	1.000	.375	7 DEG.	
OC-3000	3.000	2.625	.160	.410	1.750	5	1.000	.375	5 DEG.	
OC-4000	4.000	3.625	.160	.410	1.750	6	1.500	.625	3 DEG.	
OC-5000	5.000	4.625	.160	.410	1.750	6	1.500	.625	2 DEG.	
OC-6000	6.000	5.625	.160	.410	1.750	7	1.500	.625	1 DEG.	

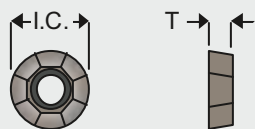
Insert Info.

Octa
Positive Top



Insert #	I.C.	T	Screw	Wrench	Grades
OPEB-535	.625	.220	838T	T-20	A9M X20
OPEB-535XP	.625	.220	838T	T-20	B1M X20

Round
Positive Top



Insert #	I.C.	T	Screw	Wrench	Grade
RPEB-535	.625	.220	838T	T-20	X20

Speed and Feed Info.

Material	S.F.M.	I.P.T.
Mild & Low Carbon Steel EX. 1018, 1020, 1117, 1141, 12L14	800-1200	.003-.012
High Carbon & Alloy Steel EX. 1045, 4140, 4340, 52100, 8620	500-800	.003-.010
Lower Carbon Tool Steel EX. P-20, H-13, S-7	400-700	.003-.010
Tool Steel EX. A-2, A-6, D-2, M-2	300-600	.003-.010
Stainless Steel EX. 304, 316, 420, 15-5PH, 17-4PH	300-600	.002-.007
Iron EX. Cast, Ductile, Nodular	600-1000	.004-.012
Nickel & Titanium Alloy EX. Inconel, Hastelloy, Ti-6AL-4V	120-180	.001-.004
Non-Ferrous Metal EX. Aluminum, Bronze, Brass	1000-2500	.004-.014